

OREGON CORNER RESTORATION FORM

SECTION 1,6,7,12 TOWNSHIP 4 NORTH RANGE 28,29 EAST E-1
 COUNTY : UMATILLA DATE MAY/20

CORNER DESIGNATION

SECTION CORNER

- CONDITION REPORT ONLY
- NOT FOUND
- RENEWED
- UNCOVERED
- SURVEYED IN
- REFERENCED

PREVIOUS RENEWALS / SURVEYS, ETC.

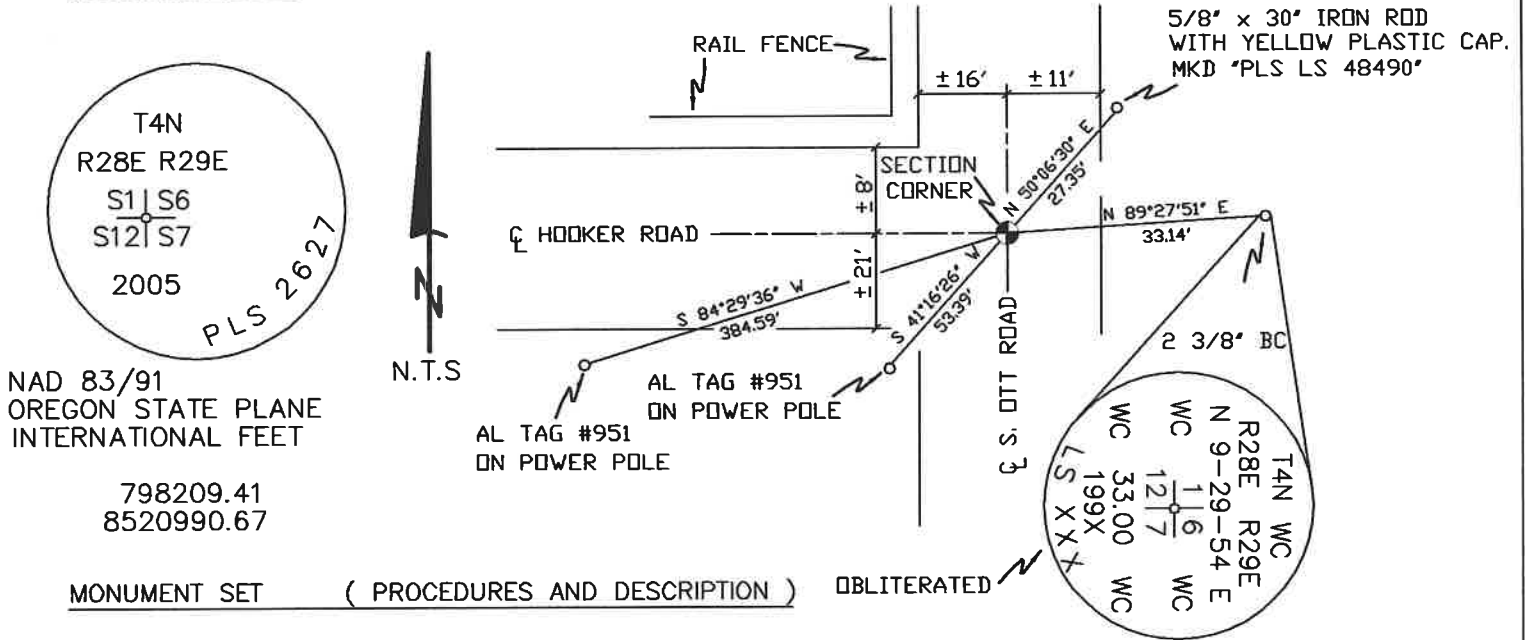
ORIGINALLY SURVEYED IN 1860 BY CAMPBELL UNDER CONTRACT #95. HE SET A POST IN A MOUND OF EARTH.
 IN 1980 KRUMBEIN SET A 2 3/8" BC OVER 2" IRON PIPE SEE SURVEY S-156-C.
 IN 2005 ROBERTS SET A 2" ALUMINUM CAP OVER 2 3/8" BC.

MONUMENTS AND ACCESSORIES FOUND: CONDITION AND SOURCE

AN ALUMINUM TAG #951 ON A POWER POLE LIES S 41°16'26" W, 53.39 FEET.
 AN ALUMINUM TAG #951 ON A POWER POLE LIES S 84°29'36" W, 384.59 FEET.
 A 2 3/8" BC STAMPED AS BELOW LIES N 89°27'51" E, 33.14 FEET.
 A 2" ALUMINUM CAP STAMPED AS BELOW.

MONUMENT DETAIL

SKETCH



MONUMENT SET (PROCEDURES AND DESCRIPTION)

OBLITERATED

NEW ACCESSORIES FROM WHICH

A 5/8" x 30" IRON ROD WITH A YELLOW PLASTIC CAP MKD "PLS LS 48490" LIES N 50°06'30" E, 27.35 FEET.

LOCATION AND COMMENTS

AT INTERSECTION OF HOOKER (ELM) AND OTT RD.

COMPASS DEC.

FIRM/AGENCY

PRIMM LAND SURVEYING
 P.O. BOX 1322
 HERMISTON, OREGON 97838

PARTY CHIEF

BRIT L. PRIMM

NOTES

WITNESS

KEITH P. PRIMM

SURVEYOR'S SEAL

REGISTERED PROFESSIONAL LAND SURVEYOR

Keith P. Primm
 OREGON
 JULY 12, 2005
 KEITH P. PRIMM
 48490

EXPIRATION DATE: 12/31/20

JAA 21-004-C

Ø1 DEC 20