

OREGON CORNER RESTORATION FORM

SECTION 4 TOWNSHIP 4N RANGE 29E A-9

COUNTY: UMATILLA DATE 9/90

CORNER DESIGNATION

NW Corner

CONDITION REPORT ONLY

NOT FOUND

RENEWED

UNRECORDED

X SURVEYED IN

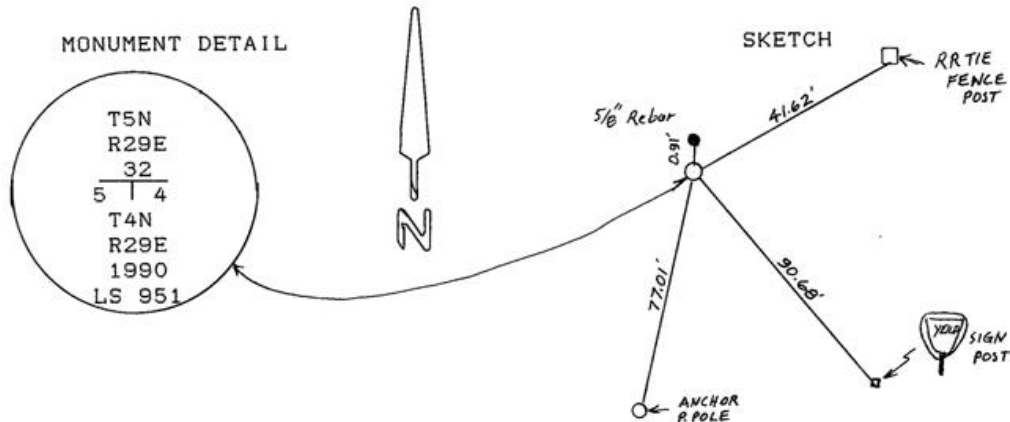
X REFERENCED OUT

PREVIOUS RENEWALS/SURVEYS, ETC.

Original survey by Davenport under Contract #101. He set post. Kimbrell set Iron pipe in 1910 Survey #308.

MONUMENTS & ACCESSORIES FOUND: Condition and Source

Found 5/8" rebar 0.91 feet North of corner set by me in 1978 survey for Myrick in Section 5.



MONUMENT SET (PROCEDURES AND DESCRIPTION)

By single proportion I set 1"x30" Iron pipe with 2 3/8" Brass Cap, stamped as above, flush with paved surface. See my Hellberg Survey, County #

NEW ACCESSORIES

From which Alum. tag #951 in RR tie fence post Bears. N58° 29'20"E 41.62 feet, 2" square metal sign post (yield) Bears. S71° 41'E 90.68 feet, Alum. tag #951 in power pole brace pole Bears. S09° 12'40"W 77.01 feet.

Attached B.O. sign to each and a witness sing to RR Tie

LOCATION & COMMENTS

At intersection of S. Edwards Rd. and Punkin Center Rd.

SURVEYOR'S SEAL

COMPASS DEC.
FIRM EDWARDS SURVEYING
P.O. BOX 763, HERMISTON,
OREGON, 97838
PARTY CHIEF D. EDWARDS
NOTES
WITNESS J. COPPOCK

**REGISTERED
PROFESSIONAL
LAND SURVEYOR**

D. Dennis Edwards

**OREGON
JULY 16, 1971
G. DENNIS EDWARDS
951**

RECEIVED BY

Umatilla County Surveyor
Date 11-90
Received by KA
No. 90-077-B