

OREGON CORNER RESTORATION FORM

SECTION 6 TOWNSHIP 4 NORTH RANGE 29 EAST A-5
 COUNTY : UMATILLA DATE 01-2002

CORNER DESIGNATION

NE CORNER

- CONDITION REPORT ONLY
- NOT FOUND
- RENEWED
- UNCOVERED
- SURVEYED IN
- REFERENCED

PREVIOUS RENEWALS / SURVEYS, ETC.

ORIGINALLY SURVEYED IN 1861 BY DAVENPORT UNDER CONTRACT #101. HE SET POST IN THE GROUND WITH A CHARRED STAKE.

KIMBRELL SET 1 1/2" IRON PIPE IN 1910.

FOUND 5/8" REBAR THAT CRAMER SET OVER KIMBRELL 1 1/2" IRON PIPE.

I SET A 2" ALUMINUM CAP ON CRAMERS 5/8" REBAR. SEE MY 1992-1 COUNTY MONUMENTATION SURVEY

MONUMENTS AND ACCESSORIES FOUND: CONDITION AND SOURCE

FOUND 5/8" REBAR, MISSING ALUMINUM CAP WHICH:

AN ALUMINUM TAG #951 ON A POWER POLE BEARS S 45°16'48" W 49.24 FEET

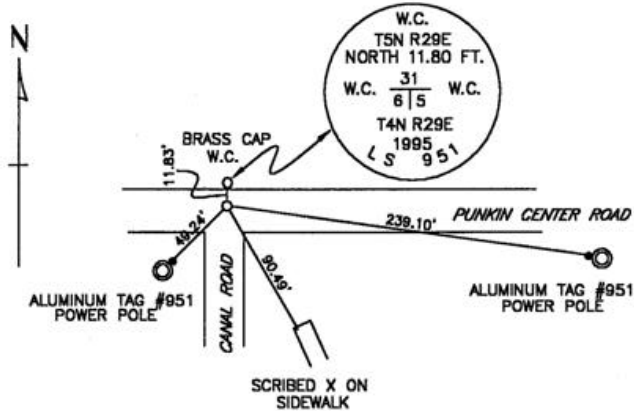
FOUND 1"X30" PIPE WITH 2 3/8" BRASS CAP W.C. BEARS N 0°15'59" E 11.83 FEET

MONUMENT DETAIL

NA

NAD 83/91
 OREGON STATE PLANE
 INTERNATIONAL FEET
 803818.8551
 8526746.9632

SKETCH



MONUMENT SET (PROCEDURES AND DESCRIPTION)

NA

NEW ACCESSORIES FROM WHICH

AN ALUMINUM TAG #951 IN A POWER POLE BEARS S 82°18'22" E 239.10 FEET

A SCRIBED X IN THE CORNER OF A SIDEWALK BEARS S 30°21'44" E 90.49 FEET

LOCATION AND COMMENTS

AT THE INTERSECTION OF
 PUNKIN CENTER AND CANAL
 ROAD.

COMPASS DEC.

FIRM/AGENCY
 EDWARDS SURVEYING
 P.O. BOX 763
 HERMISTON, OREGON 97838

PARTY CHIEF
 CURTIS FAVOREL

NOTES

WITNESS
 WALT MUNDELL

SURVEYOR'S SEAL

REGISTERED
 PROFESSIONAL
 LAND SURVEYOR

G. Dennis Edwards

OREGON
 JULY 16, 1971
 G. DENNIS EDWARDS
 9 5 1
 RENEWS 12/31/2003

03-53-9