

# OREGON CORNER RESTORATION FORM

SECTION 1,6,36 TOWNSHIP 4,5 NORTH RANGE 29,30 EAST A-25  
 COUNTY : UMATILLA DATE MAY/20

CORNER DESIGNATION

- CONDITION REPORT ONLY
- NOT FOUND
- RENEWED
- UNCOVERED
- SURVEYED IN
- REFERENCED

SECTION CORNER

PREVIOUS RENEWALS / SURVEYS, ETC.

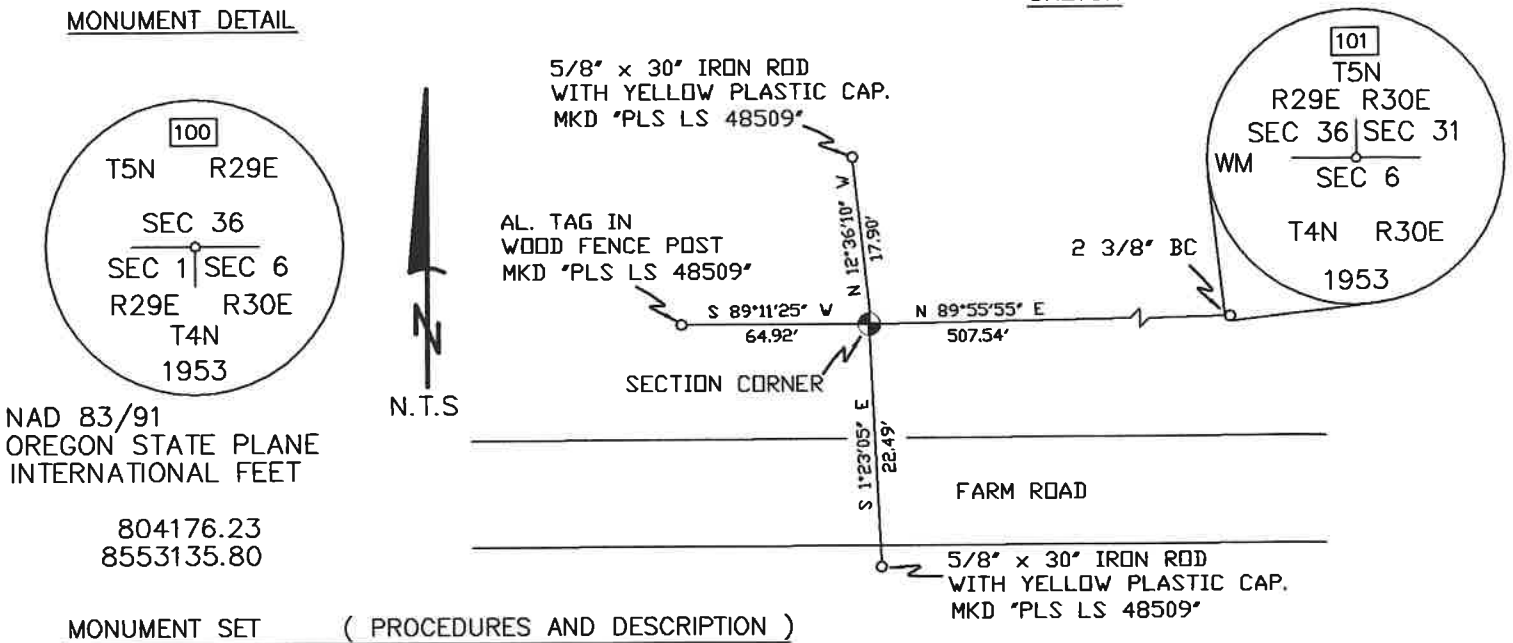
U.S. FISH AND WILDLIFE. PAGES 20 & 21, BOOK 41 FIELD NOTES.

MONUMENTS AND ACCESSORIES FOUND: CONDITION AND SOURCE

- A 2 3/8" BRASS CAP LIES N 89°55'55" E, 507.54 FEET.
- A 5/8" IRON ROD WITH A YELLOW PLASTIC CAP MKD "PLS LS 48509" LIES S 1°23'05" E, 22.49 FEET.
- AN ALUMINUM TAG STAMPED "PLS LS 48509" ON A WOOD FENCE POST LIES S 89°11'25" W, 64.92 FEET.
- A 5/8" IRON ROD WITH A YELLOW PLASTIC CAP MKD "PLS LS 48509" LIES N 12°36'10" W, 17.90 FEET.
- A 2 3/8" BC STAMPED AS BELOW.

MONUMENT DETAIL

SKETCH



NAD 83/91  
 OREGON STATE PLANE  
 INTERNATIONAL FEET

804176.23  
 8553135.80

MONUMENT SET ( PROCEDURES AND DESCRIPTION )

NEW ACCESSORIES FROM WHICH

LOCATION AND COMMENTS

FROM INTERSECTION OF KOSMOS RD. AND NORTH LOOP RD. GO EAST 1/2 MILE ON KOSMOS RD., THEN CONTINUE NORTH ON KOSMOS RD. FOR 1 MILE TO A SMALL DIRT FARM RD. THEN GO WEST 600 FEET DOWN FENCE LINE TO CORNER.

COMPASS DEC.

FIRM/AGENCY  
 PRIMM LAND SURVEYING  
 P.O. BOX 1322  
 HERMISTON, OREGON 97838

PARTY CHIEF  
 PAUL P. PILCH

NOTES

WITNESS  
 KEITH P. PRIMM

SURVEYOR'S SEAL

REGISTERED  
 PROFESSIONAL  
 LAND SURVEYOR

*Keith P. Primm*

OREGON  
 JULY 12, 2005  
 KEITH P. PRIMM  
 48490

EXPIRATION DATE: 12/31/20

IAA

21-004-C

Ø1 DEC 20