

OREGON CORNER RESTORATION FORM

SECTION 25,30 TOWNSHIP 4 NORTH RANGE 28 & 29 EAST T-1

COUNTY : UMATILLA DATE 01/02

CORNER DESIGNATION

1/4 CORNER

CONDITION REPORT ONLY

NOT FOUND

RENEWED

UNCOVERED

SURVEYED IN

REFERENCED

PREVIOUS RENEWALS / SURVEYS, ETC.

ORIGINALLY SURVEYED IN OCTOBER 1860 BY W.B. CAMPBELL UNDER CONTRACT #95. HE SET A POST, DROVE CHARRED STAKE AND MADE PITS AND MOUNDS.

IN 1954, HIGGINS SET A 1/2" IRON ROD.

IN 1980, KRUMBEIN REPLACED 1/2" IRON ROD WITH A 2 1/2" BRASS CAP STAMPED AS BELOW.

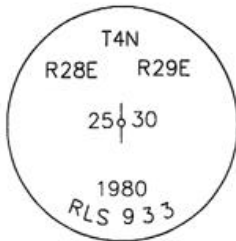
MONUMENTS AND ACCESSORIES FOUND: CONDITION AND SOURCE

AN ALUMINUM TAG #951 IN A POWER POLE LIES N 06°02'54" W, 177.71 FEET.

AN ALUMINUM TAG #951 IN A POWER POLE LIES S 25°14'44" E, 78.96 FEET.

AN ALUMINUM TAG #951 IN A POWER POLE LIES S 05°29'46" W, 184.13 FEET.

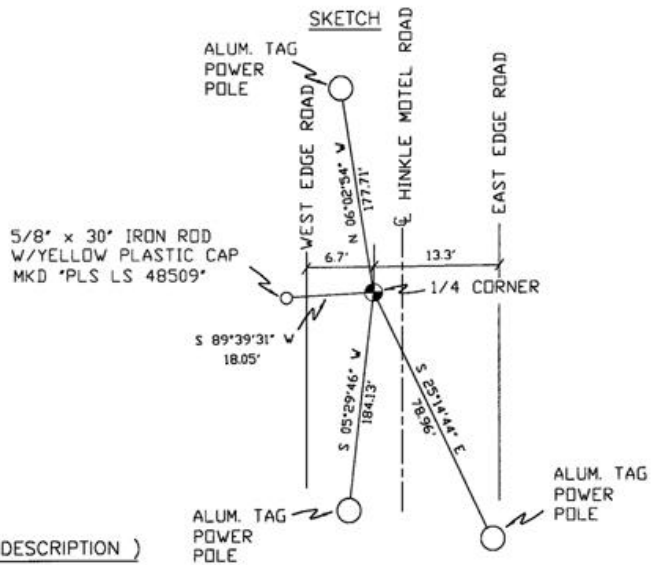
MONUMENT DETAIL



NAD 83/91
OREGON STATE PLANE
INTERNATIONAL FEET

779725.8122
8521269.6980

MONUMENT SET (PROCEDURES AND DESCRIPTION)



NEW ACCESSORIES FROM WHICH

A 5/8" x 30" IRON ROD WITH A YELLOW PLASTIC CAP MKD "PLS LS 48509" LIES S 89°39'31" W, 18.05 FEET.

RECEIVED BY

Umatilla County Surveyor

Date 2-02

Rec'd By KK

No. 02-49-9

SURVEYOR'S SEAL

LOCATION AND COMMENTS

FROM INTERSECTION OF FEEDVILLE AND OTT ROADS, GO SOUTH 1/2 MILE TO CORNER.

COMPASS DEC.

FIRM/AGENCY

PRIMM LAND SURVEYING
P.O. BOX 1322
HERMISTON, OREGON 97838

PARTY CHIEF

KEITH P. PRIMM

NOTES

WITNESS

BRIT L. PRIMM

REGISTERED
PROFESSIONAL
LAND SURVEYOR

Brit L. Primm

OREGON
JULY 13, 1999
BRIT L. PRIMM
48509

EXPIRATION DATE:12/31/02