

OREGON CORNER RESTORATION FORM

Section 24 Township 4 N Range 28 E

County UMATILLA Date 7/11/89

CORNER DESIGNATION

C 1/4

- Condition Report Only
- Not Found
- Renewed
- Unrecorded
- Surveyed In
- Referenced Out

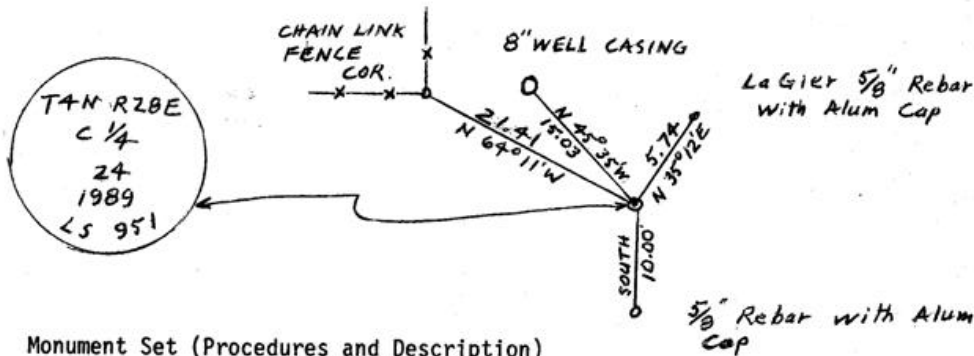
Previous Renewals/Surveys, etc. LaGier set 5/8" Rebar with Alum Cap in 1975 Rev. 1980 Sur. for Campbell

Monument(s) & Accessories Found: (Condition and Source)

Find 5/8" Rebar with Alum Cap N 35° 12' E 5.74 feet from the corner LaGier 1980

Monument Detail

Sketch



Monument Set (Procedures and Description)

By standard section subdivision method I set 1" x 30" Iron Pipe with flared bottom and 2 3/8" Brass Cap stamped as detail, 4" above surface & placed stone & concrete ^{chunks} around.

New Accessories

CENTER of 8" WELL CASING Bears N 45° 35' W 15.03 feet
Iron Pipe chain Lnk. Fence Cor. Bears N 64° 11' W 21.41 feet
5/8" Rebar with Alum. Tag Bears SOUTH 10.00 feet

Drove Metal Fence Post with witness sign 1' south of corner

Location & Comments

From intersection of Airport Rd & Hwy 395 go Sly ^{0.5 MILE} along 395 to Power Line crossing then go south 0.2 Mile along power line to corner

Compass Declination 20 1/2°
 Firm/Agency EDWARDS SURVEYING
 Address Box 763 Hermiston, OR
 Party Chief D. Edwards
 Notes _____
 Witness _____

Surveyor's Seal

REGISTERED
 PROFESSIONAL
 LAND SURVEYOR

G. Dennis Edwards

OREGON
 JULY 16, 1971
 G. DENNIS EDWARDS
 951

RECEIVED BY _____
 Umatilla County _____
 Date 11-89
 Rec'd by KK
89-86-B

OREGON CORNER RESTORATION FORM

Section 24 Township 4N Range 28E

County Umatilla Date 7/11/89

CORNER DESIGNATION

C1

- Condition Report Only
- Not Found
- Renewed
- Unrecorded
- Surveyed In
- Referenced Out

Previous Renewals/Surveys, etc. LaGier set 5/8" rebar with Aluminum Cap in 1975 Rev. 1980 survey for Campbell.

Monument(s) & Accessories Found: (Condition and Source)

Found 5/8" rebar with Aluminum Cap N 35°12'E 5.74 feet from the corner LaGier 1980

Monument Detail

Sketch

Monument Set (Procedures and Description)

By standard section subdivision method I set 1" x 30" Iron Pipe with flared bottom and 2 3/8" Brass Cap stamped as detail, 4" above surface and placed stone and concrete chunks around.

New Accessories

Center of 8" well casing bears N45°35'W 15.03 feet, iron pipe chain link fence corner bears N64°11'W 21.41 feet, 5/8" rebar with Aluminum Tag bears south 10.00 feet

Drove metal fence post with witness sign 1' south of corner

Location & Comments

Surveyor's Seal

From intersection of Compass Declination 20 1/2°
airport rd. & Hwy 395 Firm/Agency
go southerly 0.4 mile Edwards Surveying
along 395 to Power Line Address P. O. Box 763
crossing then go south Hermiston, OR
0.2 mile along Power Party Chief D. Edwards
Line to corner Notes
Witness Jud Coppock