

OREGON CORNER RESTORATION FORM

SECTION 23,24 TOWNSHIP 4 NORTH RANGE 28 EAST

P-21

COUNTY : UMATILLA DATE AUG/21

CORNER DESIGNATION

1/4 CORNER

CONDITION REPORT ONLY

NOT FOUND

RENEWED

UNCOVERED

SURVEYED IN

REFERENCED

PREVIOUS RENEWALS / SURVEYS, ETC.

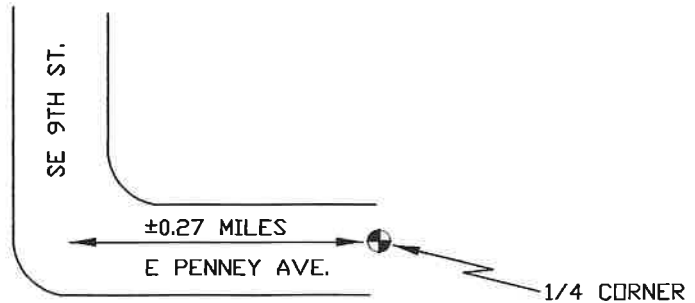
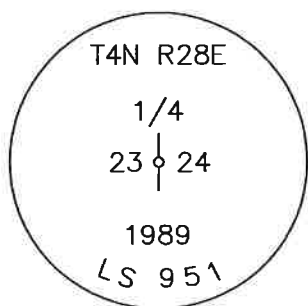
SURVEYED IN 1860 BY HAFT. LS 951 RESET THIS MONUMENT OVER A 1 1/4 INCH IRON BAR. SEE RECORD OF SURVEY 92-045-C.

MONUMENTS AND ACCESSORIES FOUND: CONDITION AND SOURCE

I RECOVERED THE CORNER AND COMPARED ITS LOCATION WITH DUAL MONUMENTATION IN THE AREA AS REQUESTED. PLEASE REFER TO TO RECORD OF SURVEY THAT WAS RECORDED ALONG WITH THIS CORNER RESTORATION FORM FOR MY ANALYSES. THE ACCESSORIES FOR THE CORNER WERE NOT RECOVERED DURING THIS SURVEY DUE TO THE FACT IT HAD NO BEARING ON THE CORNERS LOCATION. PLEASE REFER TO SURVEY NUMBER 19-080-C AND THE CORNER RESTORATION FORMS RECORDED WITH SAID RECORD OF SURVEY FOR ACCESSORY INFORMATION.

MONUMENT DETAIL

SKETCH



NAD 83/91
OREGON STATE PLANE
INTERNATIONAL FEET

784944.89
8515843.29

MONUMENT SET (PROCEDURES AND DESCRIPTION)

NEW ACCESSORIES FROM WHICH

LOCATION AND COMMENTS

FROM THE INTERSECTION OF SOUTHEAST 9TH STREET AND EAST PENNY STREET GO EASTERLY ±0.27 MILES TO THE CORNER.

FIRM/AGENCY

PRIMM LAND SURVEYING, INC.
P.O. BOX 1322
HERMISTON, OREGON 97838

LAND SURVEYOR

BRIT L. PRIMM

WITNESS

KEITH P. PRIMM

SURVEYOR'S SEAL

REGISTERED
PROFESSIONAL
LAND SURVEYOR

OREGON
JULY 13, 1999
BRIT L. PRIMM
48509

EXPIRATION DATE: 12/31/22