

OREGON CORNER RESTORATION FORM

SECTION 7 TOWNSHIP 4 N RANGE 28 E CORNER LOCATION CODE J-1

COUNTY: UMATILLA DATE: 6/92

CORNER DESIGNATION

SW CORNER OF SECTION 7, T 4 N. R 28 E. W. M. .

CONDITION REPORT ONLY

- NOT FOUND
- RENEWED
- UNRECORDED
- SURVEYED IN
- REFERENCED OUT

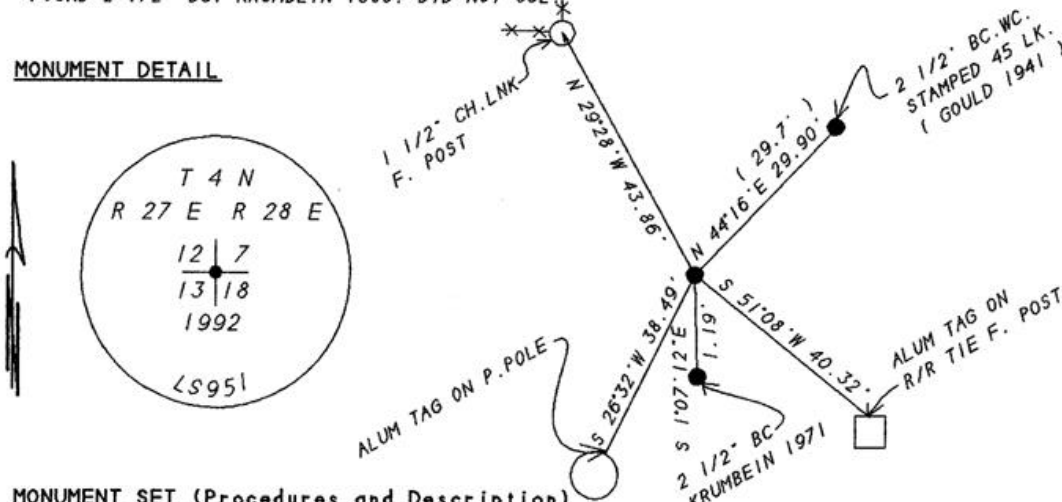
PREVIOUS RENEWALS/SURVEYS, ETC.

ORIGINAL SURVEY BY HAFT IN 1860. CONTRACT NO. 93.
 DEPENDENT RESURVEY BY GOULD IN 1941.
 PARTITION PLAT BY EDWARDS CO. NO. 1992-29.

MONUMENTS & ACCESSORIES FOUND: Condition and Source

FOUND A 2 1/2" BRASS CAP SET BY GOULD IN 1941
 1.5 FOOT BELOW SURFACE OF GRAVEL ROAD INTERSECTION.
 FOUND 2 1/2" BC. KRUMBEIN 1980. DID NOT USE

MONUMENT DETAIL



MONUMENT SET (Procedures and Description)

SET A 1" X 30" IRON PIPE WITH A 2 3/8" BRASS CAP OVER GOULD'S CAP AND 0.4 FEET BELOW SURFACE OF GRAVEL. BRASS CAP STAMPED AS ABOVE.

NEW ACCESSORIES

- A 1 1/2" STEEL CHN. LINK FENCE CORNER POST BEARS N 29°28' W 43.86'.
- A 2 1/2" B.C. W.C. STAMPED 45 LK. 1941. BEARS N 44°16' E 29.90'. (29.7)
- A ALUM TAG #951 IN A R/R TIE FENCE POST BEARS S 51°08' E 40.32'.
- A 2 1/2" BC (KRUMBEIN 1971) BEARS S 1°07' 12" E 1.19'.
- A ALUM TAG #951 IN A P. POLE BEARS S 26°32' W 38.49'.

LOCATION & COMMENTS

AT THE INTERSECTION OF BRIDGE ROAD AND WALKER ROAD.

COMPASS DEC _____
 FIRM EDWARDS SURVEYING
P.O. BOX 763
HERMISTON, OR. 97838
 PARTY CHIEF D. EDWARDS
 NOTES J. COPPOCK
 WITNESS J. COPPOCK

SURVEYOR'S SEAL

REGISTERED PROFESSIONAL LAND SURVEYOR

G. Dennis Edwards

OREGON
 JULY 16, 1971
 G. DENNIS EDWARDS
 951

RENEWS 12/31/95

RECEIVED BY
 Umatilla County
 Date 1-96
 Rec'd By KR
 No. 96-13-L