

CORNER RESTORATION FORM

Township 4N Range 28E Section 4,5,8,9 County UMATILLA

State OREGON Date 7-17-2019 Number E-9

Corner Designation : 4,5,8,9

Condition Report Only

Not Found

Renewed

Surveyed In

Referenced

Previous Renewals ORIGINAL SOURCE OF CORNER

ORIGINALLY SURVEYED IN 1860 BY HAFT UNDER CONTRACT

#93, HE SET POST IN MOUND WITH TRENCH, MADE PITTS AND

DEPOSITED A PINT OF CHARCOAL.

MONUMENT DETAIL

Found Set

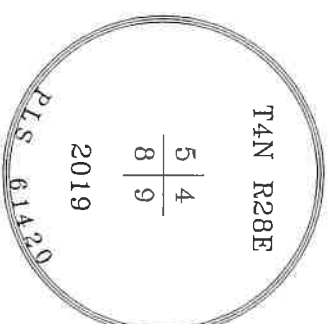
Accessories Found:

NONE

BASIS OF BEARINGS, NAD 83/91 OREGON STATE PLANE
COORDINATES NORTH ZONE:

NORTHING: 798132.30

EASTING: 8499810.52



Monument & Accessories Set (Procedure and Description)

PLACED A 2 1/2" BRASS CAP ON 1 1/2 X 12" PIPE OVER FOUND 3/4" O.D. IRON PIPE WITH PINK MAGNET
AND ORANGE FLAGGING 14" BELOW GRAVEL. PER SURVEY 07-231-B.

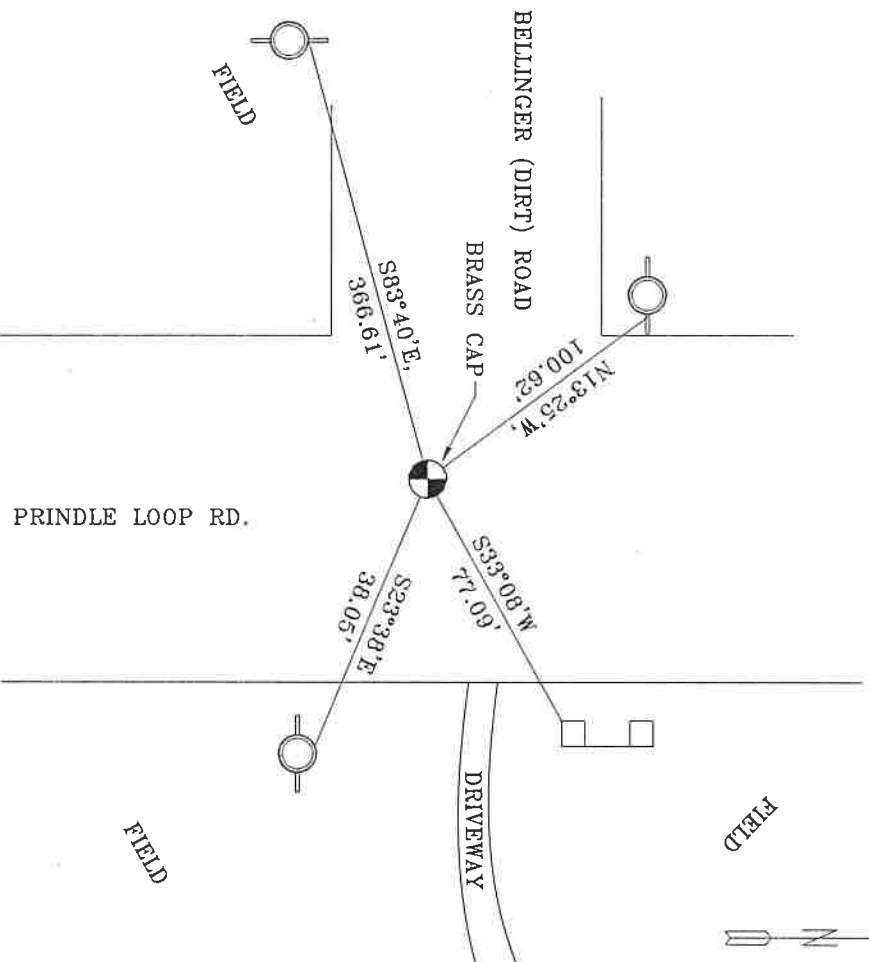
SET 1 1/2" STEEL WASHER MARKED 61420, IN POWER POLE W/MAG NAIL, N13°25'W, 100.62 FT.

SW CORNER OF THE SOUTH 5X5" GALVANIZED STEEL POST (PIVOT STOP), S33°08'W 77.09 FT.

SET 1 1/2" STEEL WASHER MARKED 61420, IN POWER POLE W/MAG NAIL & BEARING OBJECT SIGN, S23°38'E,
38.05 FT.

SET 1 1/2" STEEL WASHER MARKED 61420, IN POWER POLE W/MAG NAIL, S83°40'E, 366.61 FT.

Sketch of Monument, Accessories and General Area



**REGISTERED
PROFESSIONAL
LAND SURVEYOR**

Lance Clark King
OREGON
MAY 10, 2011
LANCE CLARK KING
61420

RENEWS: 6/30/2021

Agency:

CK3, LLC
945 W. ORCHARD
HERMISTON OREGON 97838
OFFICE: 541-567-2345
FAX: 541-567-2305
WEB: CK3LLC.NET
Field Book # 0-325

**COUNTY SURVEYOR
RECORDING INFO**

Received _____

Filed _____

Survey No. _____

Drawing No. _____

Index No. E-9

19-080-C