

OREGON CORNER RESTORATION FORM

SECTION 6 TOWNSHIP 4N RANGE 28E CORNER LOCATION CODE E-5

COUNTY: UMATILLA DATE: MAR 11 1994

CORNER DESIGNATION

SE CORNER OF SECTION 6. TAN. R28E..W.M..

- CONDITION REPORT ONLY
- NOT FOUND
- RENEWED
- UNRECORDED
- SURVEYED IN
- REFERENCED OUT

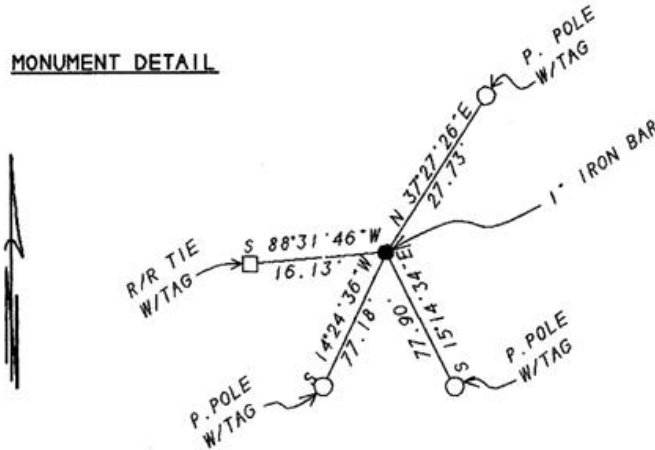
PREVIOUS RENEWALS/SURVEYS, ETC.

ORIGINAL SURVEY BY HAFT IN 1860. CONTRACT NO. 93.  
1" IRON BAR SET BY STAEBLER IN 1974 IN PLACE OF FOUND IRON SPIKE.  
THIS SURVEY COUNTY NO. 94-022-C. EDWARDS FOR OREGON DOT..

MONUMENTS & ACCESSORIES FOUND: Condition and Source

FOUND IN GOOD CONDITION A 1" IRON BAR 0.1' BELOW SURFACE OF ASPHALT.

MONUMENT DETAIL



MONUMENT SET (Procedures and Description)

DID NOT SET NEW MONUMENT.

NEW ACCESSORIES

- ALUM. TAG #951 IN POWER POLE BEARS N 37°27'26\"E 27.73 FEET.
- ALUM. TAG #951 IN POWER POLE BEARS S 15°14'34\"E 77.90 FEET.
- ALUM. TAG #951 IN POWER POLE BEARS S 14°24'36\"W 77.18 FEET.
- ALUM. TAG #951 IN R/R TIE BEARS S 88°31'46\"W 16.13 FEET.

LOCATION & COMMENTS

FROM THE INTERSECTION OF BRIDGE ROAD AND AGNEW ROAD, GO NORTH ALONG AGNEW ROAD 1 MILE TO CORNER.

COMPASS DEC \_\_\_\_\_  
 FIRM EDWARDS SURVEYING  
P.O. BOX 763  
HERMISTON, OR. 97838  
 PARTY CHIEF D. EDWARDS  
 NOTES J. COPPOCK  
 WITNESS J. COPPOCK

SURVEYOR'S SEAL

REGISTERED  
 PROFESSIONAL  
 LAND SURVEYOR

*G. Dennis Edwards*

OREGON  
 JULY 16, 1971  
 G. DENNIS EDWARDS  
 951

RENEWS 12/31/95

RECEIVED BY

Umatilla County Surveyor  
 Date 1-96  
 Rec'd By KR  
 No. 96-12R