

OREGON CORNER RESTORATION FORM

SECTION 1,6,7,12 TOWNSHIP 4 NORTH RANGE 28,29 EAST E-1
 COUNTY : UMATILLA DATE 02/02

CORNER DESIGNATION

SECTION CORNER

- CONDITION REPORT ONLY
- NOT FOUND
- RENEWED
- UNCOVERED
- SURVEYED IN
- REFERENCED

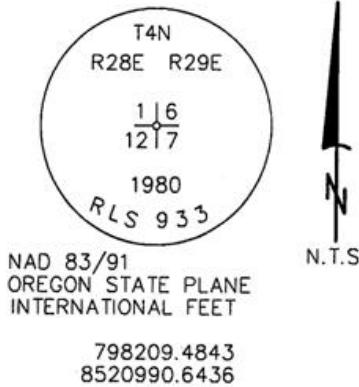
PREVIOUS RENEWALS / SURVEYS, ETC.

ORIGINALLY SURVEYED IN 1860 BY CAMPBELL UNDER CONTRACT #95. HE SET A POST IN A MOUND OF EARTH.
 IN 1980 KRUMBEIN SET A 2 1/2" BC OVER 2" IRON PIPE SEE SURVEY S-156.

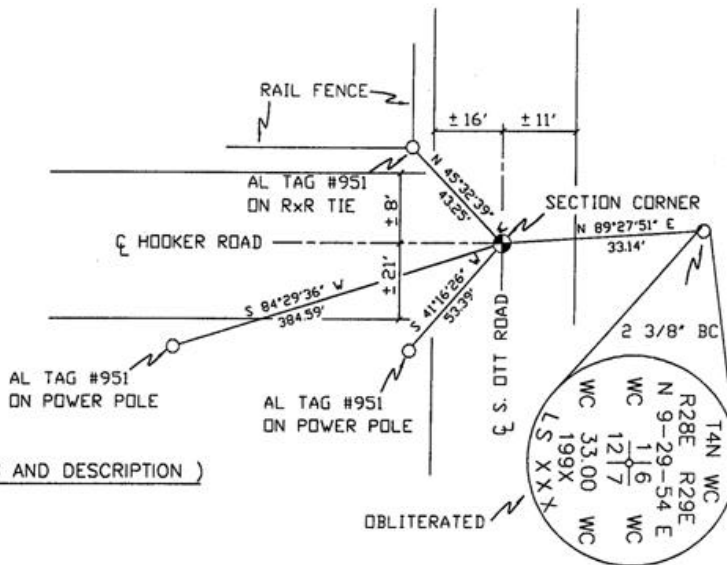
MONUMENTS AND ACCESSORIES FOUND: CONDITION AND SOURCE

AN ALUMINUM TAG #951 ON A RXR TIE FENCE POST LIES N 45°32'39" W, 43.25 FEET.
 AN ALUMINUM TAG #951 ON A POWER POLE LIES S 41°16'26" W, 53.39 FEET.
 AN ALUMINUM TAG #951 ON A POWER POLE LIES S 84°29'36" W, 384.59 FEET.
 A 2 3/8" BC STAMPED AS BELOW LIES N 89°27'51" E, 33.14 FEET.

MONUMENT DETAIL



SKETCH



MONUMENT SET (PROCEDURES AND DESCRIPTION)

NEW ACCESSORIES FROM WHICH

LOCATION AND COMMENTS

AT INTERSECTION OF
 HOOKER (ELM) AND
 OTT RD.

COMPASS DEC.

FIRM/AGENCY
 PRIMM LAND SURVEYING
 P.O. BOX 1322
 HERMISTON, OREGON 97838

PARTY CHIEF
 KEITH P. PRIMM

NOTES

WITNESS
 BRIT L. PRIMM

SURVEYOR'S SEAL

REGISTERED
 PROFESSIONAL
 LAND SURVEYOR

Brit L. Primm
 OREGON
 JULY 13, 1999
 BRIT L. PRIMM
 48509

EXPIRATION DATE: 12/31/02

03-52-9