

OREGON CORNER RESTORATION FORM

SECTION 6 TOWNSHIP 4 N. RANGE 28 E CORNER LOCATION CODE A-5

COUNTY: UMATILLA DATE: March 1994

CORNER DESIGNATION

NORTHEAST CORNER

CONDITION REPORT ONLY

NOT FOUND

RENEWED

UNRECORDED

SURVEYED IN

REFERENCED OUT

PREVIOUS RENEWALS/SURVEYS, ETC.

ORIGINAL SURVEY BY HALT IN 1860. CONTRACT NO. 93.

DEPENDANT RESURVEY BY GOULD IN 1941.

SURVEY BY PALMER IN 1976.

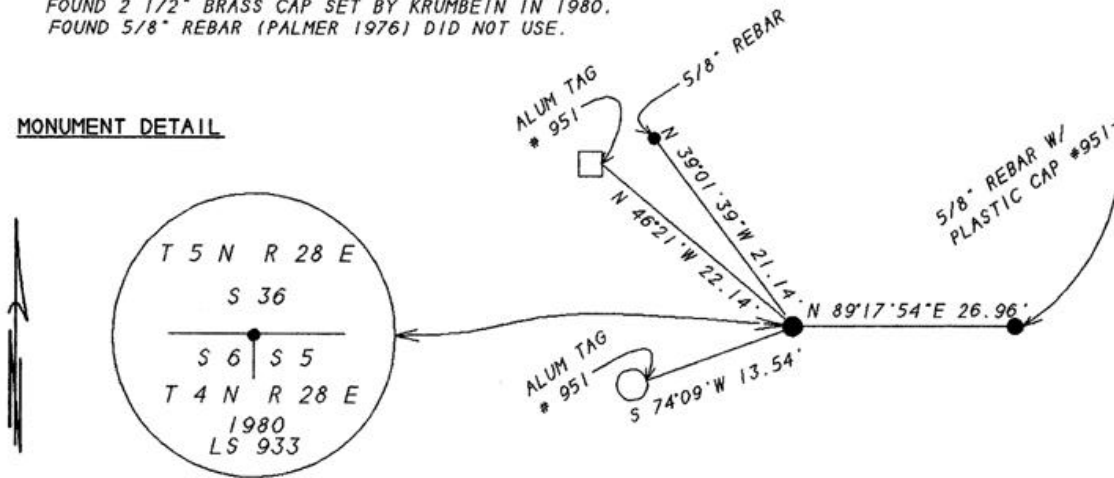
SURVEY BY UMATILLA COUNTY SURVEYOR (D. KRUMBEIN) IN 1980.

MONUMENTS & ACCESSORIES FOUND: Condition and Source

FOUND 2 1/2" BRASS CAP SET BY KRUMBEIN IN 1980.

FOUND 5/8" REBAR (PALMER 1976) DID NOT USE.

MONUMENT DETAIL



MONUMENT SET (Procedures and Description)

NO NEW MONUMENT SET.

SEE MY SURVEY COUNTY NO. 94-022-C.

NEW ACCESSORIES

PALMER'S 1976 5/8" REBAR BEARS N 39°01'39"W 21.14 FEET.

ALUM. TAG ON R/R TIE BEARS N 46°21' W 22.19 FEET.

ALUM TAG ON LOCUST POST BEARS S 74°09' W 13.54 FEET.

5/8" X 30" REBAR WITH PLASTIC CAP #951 BEARS N 89°17'54" E 26.96 FEET.

LOCATION & COMMENTS

FROM THE WEST END OF FRONTAGE ROAD ON THE NORTH SIDE OF 1-82 AT THE TOWNSHIP LINE GO WEST ALONG FENCE LINE 0.3 MILES TO THE CORNER.

COMPASS DEC _____
 FIRM EDWARDS SURVEYING
P. O. BOX 763
HERMISTON, OR. 97838
 PARTY CHIEF D. EDWARDS
 NOTES J. COPPOCK
 WITNESS J. COPPOCK

SURVEYOR'S SEAL

REGISTERED
 PROFESSIONAL
 LAND SURVEYOR

G. Dennis Edwards

OREGON
 JULY 16, 1971
 G. DENNIS EDWARDS
 951

RENEWS 12/31/95

RECEIVED BY

Umatilla County Surveyor
 Date 1-96
 Rec'd by KIC
 No. 96-12-R