

OREGON CORNER RESTORATION FORM

SECTION 6 TOWNSHIP 4 N RANGE 28 E CORNER LOCATION CODE A-3

COUNTY: UMATILLA DATE: March 1994

CORNER DESIGNATION  
NORTH 1/4 OF SECTION 6, T 4 N, R 28 E, W.M..

CONDITION REPORT ONLY  
 NOT FOUND  
 RENEWED  
 UNRECORDED  
 SURVEYED IN  
 REFERENCED OUT

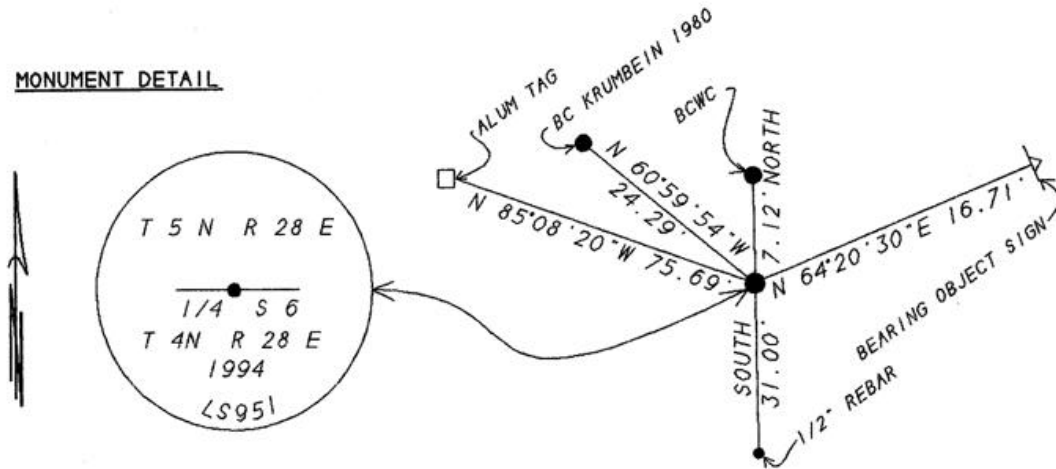
PREVIOUS RENEWALS/SURVEYS, ETC.

ORIGINAL SURVEY BY HALT IN 1860. CONTRACT NO. 93.  
DEPENDANT RESURVEY BY GOULD IN 1941.  
SURVEY BY UMATILLA COUNTY SURVEYOR ( D. KRUMBEIN ) IN 1980.

MONUMENTS & ACCESSORIES FOUND: Condition and Source

FOUND KRUMBEIN'S 1980 BRASS CAP. DID NOT USE.

MONUMENT DETAIL



MONUMENT SET (Procedures and Description)

BY SINGLE PROPORTION I SET A 1" X 30" GALVANIZED PIPE WITH A 2 3/8" BRASS CAP STAMPED AS ABOVE AT SURFACE OF GROUND.  
SEE MY SURVEY COUNTY NO. 94-022-C.

NEW ACCESSORIES

BRASS CAP WITNESS CORNER SET NORTH 7.12 FEET AND UNDER FENCE.  
1/2" X 24" REBAR WITH PLASTIC CAP # 951 BEARS SOUTH 31.00 FEET AND 1 FOOT BELOW SURFACE OF GROUND.  
ALUM TAG #951 ON R/R TIE FENCE POST BEARS N 85°08'20"W 75.69 FEET.  
BEARING OBJECT SIGN ON 2" X 2" ANGLE IRON BEARS N 64°20'30"E 16.71 FEET.  
KRUMBEIN'S 2 1/2" BC BEARS N 60°59'54" W 24.29 FEET.

LOCATION & COMMENTS

FROM THE WEST END OF FRONTAL ROAD ON THE NORTH SIDE OF 1-82 AT THE TOWNSHIP LINE GO WEST ALONG FENCE LINE 0.8 MILES TO THE CORNER.

COMPASS DEC \_\_\_\_\_  
FIRM EDWARDS SURVEYING  
P.O. BOX 763  
HERMISTON, OR. 97838  
PARTY CHIEF D. EDWARDS  
NOTES J. COPPOCK  
WITNESS J. COPPOCK

SURVEYOR'S SEAL

REGISTERED  
PROFESSIONAL  
LAND SURVEYOR

*G. Dennis Edwards*

OREGON  
JULY 16, 1971  
G. DENNIS EDWARDS  
951

RENEWS 12/31/95

RECEIVED BY  
Umatilla County Surveyor  
Date 1-96  
Rec'd by KR  
No. 96-12-R