

OREGON CORNER RESTORATION FORM

SECTION 1,6,36 TOWNSHIP 4,5 NORTH RANGE 28,29 EAST A-1
 COUNTY : UMATILLA DATE MAY/20

CORNER DESIGNATION
 SECTION CORNER

CONDITION REPORT ONLY
 NOT FOUND
 RENEWED
 UNCOVERED
 SURVEYED IN
 REFERENCED

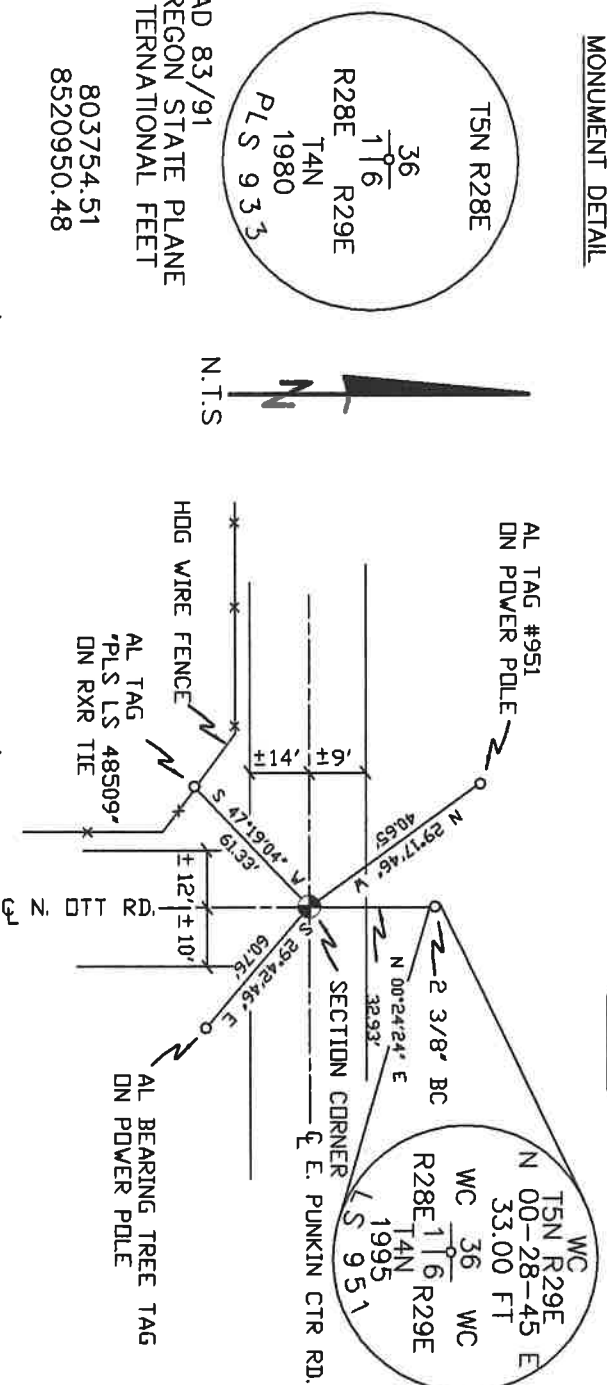
PREVIOUS RENEWALS / SURVEYS, ETC.

ORIGINALLY SURVEYED IN 1860 BY CAMPBELL UNDER CONTRACT #95. HE SET A POST IN A MOUND.
 IN 1972 STABLER FOUND A 1" IRON PIPE.
 IN 1980 KRUMBEN FOUND A 3/4" IRON PIPE WITH WOOD STAKE AND SET A 2 1/2" BC STAMPED AS BELOW.

MONUMENTS AND ACCESSORIES FOUND: CONDITION AND SOURCE

AN ALUMINUM BEARING TREE TAG ON A POWER POLE LIES S 29°42'46" E, 60.76 FEET.
 AN ALUMINUM TAG #951 ON A POWER POLE LIES N 29°17'46" W, 40.65 FEET.
 A 2 3/8" BC STAMPED AS BELOW LIES N 00°24'24" E, 32.93 FEET.
 A 1" x 1" ALUMINUM TAG MKD "PLS LS 48509" ON A RXR TIE FENCE POST LIES S 47°19'04" W, 61.33 FEET.
 A 2 3/8" BC STAMPED AS BELOW.

SKETCH



MONUMENT SET (PROCEDURES AND DESCRIPTION)

NAD 83/91
 OREGON STATE PLANE
 INTERNATIONAL FEET
 803754.51
 8520950.48

NEW ACCESSORIES FROM WHICH

LOCATION AND COMMENTS

AT INTERSECTION OF PUNKIN
 CENTER RD. AND OTT RD. SOUTH.

COMPASS DEC.

SURVEYOR'S SEAL

FIRM/AGENCY
 PRIMM LAND SURVEYING
 P.O. BOX 1322
 HERMISTON, OREGON 97838

REGISTERED
 PROFESSIONAL
 LAND SURVEYOR

PARTY CHIEF
 KEITH P. PRIMM

OREGON
 JULY 12, 2005
 KEITH P. PRIMM
 48490

NOTES
 WITNESS
 KEITH P. PRIMM

EXPIRATION DATE: 12/31/20

21-004-C

Φ1 DEC 20