

OREGON CORNER RESTORATION FORM

Section 2 Township 3N Range 27E
 County Umatilla Date: 06-14-02

Corner Designation: 3N27A19

| | |
|-------------------------------|-----------------------|
| <u> </u> <u>x</u> <u> </u> | Condition Report Only |
| <u> </u> <u> </u> <u> </u> | Not Found |
| <u> </u> <u> </u> <u> </u> | Re monumented |
| <u> </u> <u> </u> <u> </u> | Unrecorded |
| <u> </u> <u>x</u> <u> </u> | Surveyed In |
| <u> </u> <u> </u> <u> </u> | Referenced Out |

Previous Renewals / Surveys, etc.

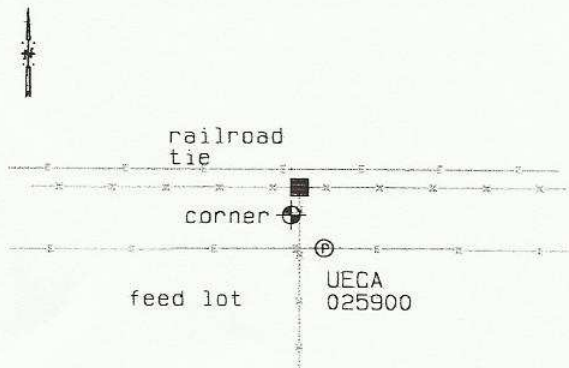
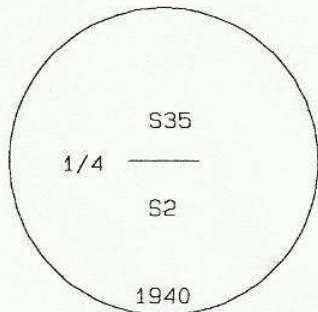
Corner set by GLO in 1940.
 Survey 97-176-B reported finding this monument.

Monument and Accessories Found: (condition and source)

Found standard GLO brass cap next to railroad tie at northeast corner of feed lot.

SKETCH

DIAGRAM



MONUMENT (S) AND ACCESSORIES SET (Procedures and Description)

None.

REFERENCES SET:

None.
 Made GPS tie to TRI Station
 Stanfield East Base.
 Latitude 45°46'39.17857"N
 Longitude 119°24'13.30016"W
 NAD 83(1991)

Oregon State Plane Coord. - North Zone
 Northing 771485.06
 Easting 8481812.11
 Ortho Height 565.40
 Ellipsoidal Height 494.46

Location and Comments

Compass Declination
20°E

Surveyors Seal

From the junction of County Line Road and Key Road,
 follow the power line east 1.5 miles.

REGISTERED
 PROFESSIONAL
 LAND SURVEYOR

RECEIVED BY:

Firm / Agency

David L. Haddock

Date: 7-02
 Rec'd By: RE
 No. 02-186-9

Haddock Surveying
 P. O. Box 1574
 Pendleton, OR 97801
 (541) 276-2174

OREGON
 JULY 12, 1968
 DAVID L. HADDOCK
 852

RENEWS 6-30-03