

OREGON CORNER RESTORATION FORM

SECTION 36 TOWNSHIP 4 NORTH RANGE 27 EAST

X-25

COUNTY : UMATILLA DATE 12/02

CORNER DESIGNATION

E 1/4 CORNER

- CONDITION REPORT ONLY
- NOT FOUND
- RENEWED
- UNCOVERED
- SURVEYED IN
- REFERENCED

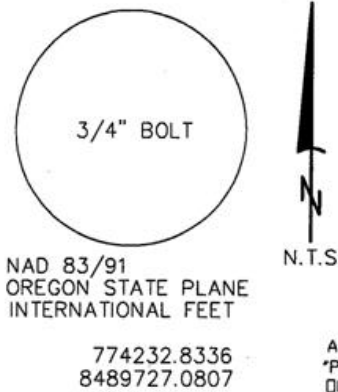
PREVIOUS RENEWALS / SURVEYS, ETC.

ORIGINALLY SURVEYED UNDER CONTRACT #93 IN 1860 BY HAFT.
 RESURVEYED BY WALDEN UNDER CONTRACT #209.
 GOULD 1941 DEPENDENT RE-SURVEY SET A 3 1/2" BRASS CAP.
 IN 1990 SURVEY FOR LAMB-WESTON, EDWARDS FND GOULD'S B.C. 2.5 FEET
 BELOW THE SURFACE. HE SET A 3/4" X 24" BOLT 4" BELOW THE SURFACE
 OVER GOULD'S BRASS CAP.

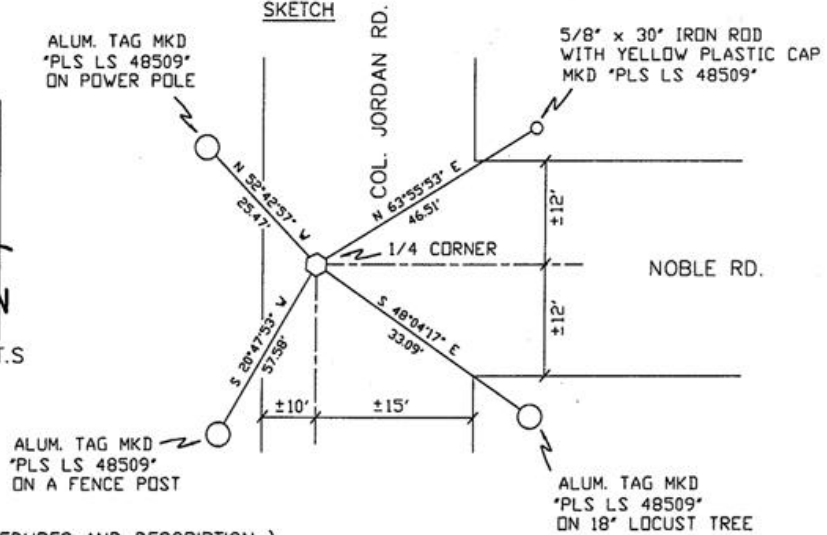
MONUMENTS AND ACCESSORIES FOUND: CONDITION AND SOURCE

A 3/4" BOLT

MONUMENT DETAIL



SKETCH



MONUMENT SET (PROCEDURES AND DESCRIPTION)

NEW ACCESSORIES FROM WHICH

A 5/8" x 30" IRON ROD WITH A YELLOW PLASTIC CAP MKD "PLS LS 48509" LIES N 63°55'53" E, 46.51 FEET.
 AN ALUMINUM TAG "PLS LS 48509" ON A 18 LOCUST TREE LIES S 48°04'17" E, 33.09 FEET.
 AN ALUMINUM TAG "PLS LS 48509" ON A FENCE POST LIES S 20°47'53" W, 57.58 FEET.
 AN ALUMINUM TAG "PLS LS 48509" ON A POWER POLE LIES N 52°42'57" W, 25.47 FEET.

LOCATION AND COMMENTS

CORNER IS AT INTERSECTION
 OF COL. JORDAN RD. &
 NOBLE RD.

COMPASS DEC.

FIRM/AGENCY
 PRIMM LAND SURVEYING
 P.O. BOX 1322
 HERMISTON, OREGON 97838

PARTY CHIEF
 KEITH P. PRIMM

NOTES

WITNESS
 BRIT L. PRIMM

SURVEYOR'S SEAL

REGISTERED
 PROFESSIONAL
 LAND SURVEYOR

Brit L. Primm
 OREGON
 JULY 13, 1999
 BRIT L. PRIMM
 48509

EXPIRATION DATE: 12/31/04

03-49-9