

# OREGON CORNER RESTORATION FORM

SECTION 34 TOWNSHIP 4 NORTH RANGE 27 EAST X-17  
 COUNTY : UMATILLA DATE 12/02

CORNER DESIGNATION

E 1/4 CORNER

- CONDITION REPORT ONLY
- NOT FOUND
- RENEWED
- UNCOVERED
- SURVEYED IN
- REFERENCED

PREVIOUS RENEWALS / SURVEYS, ETC.

ORIGINALLY SURVEYED UNDER CONTRACT #209 IN 1874 BY WALDEN.  
 UMATILLA COUNTY 1969, THOMPSON CS #H-25-AX.

MONUMENTS AND ACCESSORIES FOUND: CONDITION AND SOURCE

A 2 1/2" BRASS CAP.

MONUMENT DETAIL

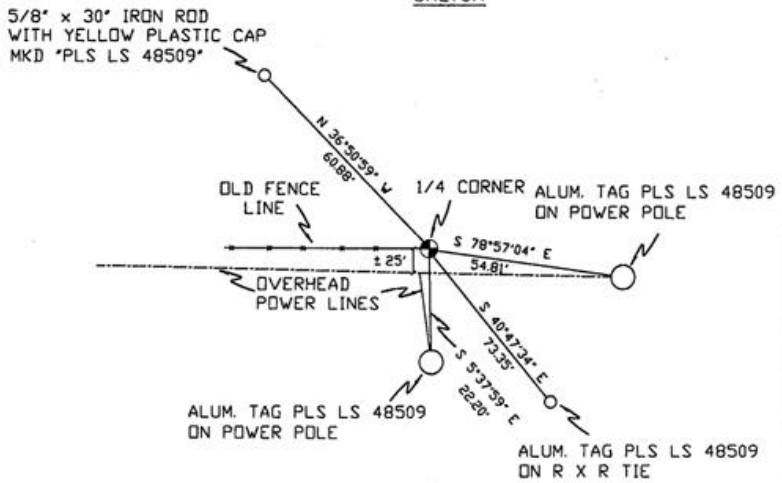


NAD 83/91  
 OREGON STATE PLANE  
 INTERNATIONAL FEET

774094.4293  
 8479111.9881



SKETCH



MONUMENT SET ( PROCEDURES AND DESCRIPTION )

NEW ACCESSORIES FROM WHICH

A 5/8" x 30" IRON ROD WITH A YELLOW PLASTIC CAP MKD "PLS LS 48509" LIES N 36°50'59" W, 60.88 FEET.  
 AN ALUMINUM TAG "PLS LS 48509" ON A POWER POLE LIES S 78°57'04" E, 54.81 FEET.  
 AN ALUMINUM TAG "PLS LS 48509" ON A R x R TIE LIES S 40°47'34" E, 73.35 FEET.  
 AN ALUMINUM TAG "PLS LS 48509" ON A POWER POLE LIES S 5°37'59" E, 22.20 FEET.

LOCATION AND COMMENTS

FROM THE WATER TOWER AT THE  
 SOUTHEAST CORNER. OF THE OLD  
 TOWNSITE OF ORDINANCE ON THE  
 SOUTH SIDE OF I-84 GO SOUTH  
 ALONG DIRT FARM RD. 0.75 MILES  
 TO CORNER, CORNER FALLS AT THE  
 INTERSECTION OF AN EAST-WEST  
 POWERLINE AND NORTH-SOUTH  
 POWERLINE.

COMPASS DEC.

FIRM/AGENCY  
 PRIMM LAND SURVEYING  
 P.O. BOX 1322  
 HERMISTON, OREGON 97838

PARTY CHIEF  
 KEITH P. PRIMM

NOTES

WITNESS  
 BRIT L. PRIMM

SURVEYOR'S SEAL

REGISTERED  
 PROFESSIONAL  
 LAND SURVEYOR

*Brit L. Primm*  
 OREGON  
 JULY 13, 1999  
 BRIT L. PRIMM  
 48509

EXPIRATION DATE: 12/31/04

03-49-9