

OREGON CORNER RESTORATION FORM

SECTION 3 TOWNSHIP 4 NORTH RANGE 27 EAST
 COUNTY : UMATILLA & MORROW DATE 12/02

A-13

CORNER DESIGNATION

NW CORNER

CONDITION REPORT ONLY
 NOT FOUND
 RENEWED
 UNCOVERED
 SURVEYED IN
 REFERENCED

PREVIOUS RENEWALS / SURVEYS, ETC.
 CORPS OF ENGINEERS 1987

MONUMENTS AND ACCESSORIES FOUND: CONDITION AND SOURCE

A 3 1/2" ALUMINUM CAP.

MONUMENT DETAIL

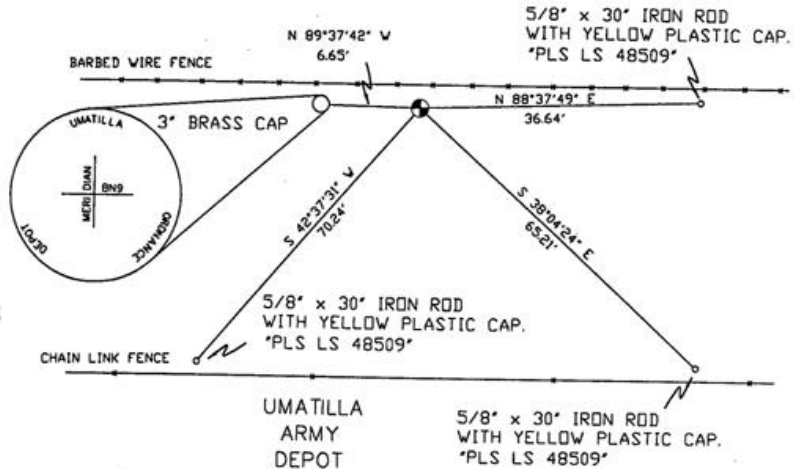


NAD 83/91
 OREGON STATE PLANE
 INTERNATIONAL FEET

803228.6150
 8473488.3745

N.T.S.

SKETCH



MONUMENT SET (PROCEDURES AND DESCRIPTION)

NEW ACCESSORIES FROM WHICH

- A 5/8" x 30" IRON ROD WITH A YELLOW PLASTIC CAP MKD "PLS LS 48509" LIES N 88°37'49" E, 36.64 FEET.
- A 5/8" x 30" IRON ROD WITH A YELLOW PLASTIC CAP MKD "PLS LS 48509" LIES S 38°04'24" E, 65.21 FEET.
- A 5/8" x 30" IRON ROD WITH A YELLOW PLASTIC CAP MKD "PLS LS 48509" LIES S 42°37'31" W, 70.24 FEET.
- A 3" BRASS CAP STAMPED AS ABOVE LIES N 89°37'42" W, 6.65 FEET.

LOCATION AND COMMENTS

FROM NORTH ENTRANCE OF THE
 UMATILLA ARMY DEPOT FROM
 DIVISION STREET GO EAST
 ALONG BOUNDARY FENCE
 2 1/2 MILES TO CORNER.

COMPASS DEC.

FIRM/AGENCY
 PRIMM LAND SURVEYING
 P.O. BOX 1322
 HERMISTON, OREGON 97838

SURVEYOR'S SEAL

REGISTERED
 PROFESSIONAL
 LAND SURVEYOR

PARTY CHIEF
 KEITH P. PRIMM

[Signature]
 OREGON
 JULY 13, 1999
 BRIT L. PRIMM
 48509

NOTES

RECEIVED BY

WITNESS

BRIT L. PRIMM

Umatilla County Surveyor

Date 8-03

EXPIRATION DATE: 12/31/04

Rec'd By *[Signature]*

05-49-a