

USDA-FOREST SERVICE

Index  
File No. A-13

**CORNER RECORD (SEARCH)**

(Ref. FSM 7151.4)

Tract or  
Survey No. \_\_\_\_\_

Cor.  
No. Section

T 3S R. 33E

R.D. Ukiah

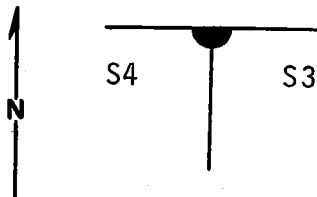
County Umatilla

Merid. Willamette

N.F. Umatilla

State Oregon

**CORNER DIAGRAM**



**DESCRIBE CORNER MONUMENT FOUND**

At corner location found stone 15"x12"x7", 6" above the ground with 3 notches on E & W faces visible. A stone mound one (1) foot high and 3 ft. dia. at base is along west side of corner stone.

**DESCRIBE BEARING TREES OR OTHER OFFICIAL ACCESSORIES FOUND**

Could find no trace of willow B.T..

**PHOTO IDENTIFICATION DATA**

Photo No. \_\_\_\_\_

Filed At. \_\_\_\_\_

Object Ident. \_\_\_\_\_

Ident. By \_\_\_\_\_

*Signature*

**PLANE COORDINATE POSITION DATA**

State \_\_\_\_\_ Zone \_\_\_\_\_

X \_\_\_\_\_

Y \_\_\_\_\_

Estab. By \_\_\_\_\_

*Agency*

*Signature*

Title

Division  
ORLS

Headquarters  
1294

Date  
9-77

7100-52-(3/68)

**CORNER RECORD (PERPETUATION)**

**MONUMENT: DESCRIBE NEW MONUMENT SET, OR WORK DONE TO PRESERVE EXISTING MONUMENT**

In Place of original stone set 2 1/2"x30" galvanized pipe with brass cap stamped:

Set pipe 22" in ground with mound of stone to cap. Buried original stone alongside.

T2S R33 E  
 S31  
 54 | S3  
 T3S  
 1980  
 OR PLS 1294

9

**ACCESSORIES : DESCRIBE NEW BT'S WITNESS OBJECTS ETC. ESTABLISHED, OR WORK DONE TO PRESERVE EXISTING EVIDENCE**

Bearing Trees:

A Douglas Fir 15" dia. Bears S34<sup>0</sup>E, 55.7 ft., scribed T3S R33E S3 BT.

A Douglas Fir 27" dia. bears S78<sup>0</sup>W, 47.0 ft., scribed T3S R33E S4 BT.

Attached 54-3 & 54-4 signs to all BTs. Attached brass washer stamped LS1294 to foot blaze of new BT's. Painted blazes and 6" band around both BT's red. Attached 54-2 & 54-4 signs to metal post 5' west of corner.

10

Work Done By R. C. Orton Title Party Chief Date 6-30-80 State Registration No.                       
 or Agency                     

Certified Cor. Record Prepared ? (Yes)      No      Filed At:                      Date                     

11

**REMARKS**

Witnesses: R. Orton  
 L. Huntsman  
 D. Allen

12

Index File No. A-13 T. 3S R. 33E M.                      Tract or Surv. No.                      Cor.                       
 U.S. G.P.O. 1977-725-576/586

13

Bw-16

Index File No. H+13

CORNER RECORD (SEARCH)

Tract-or Survey No. \_\_\_\_\_

22 4  
Cor. No. A-13

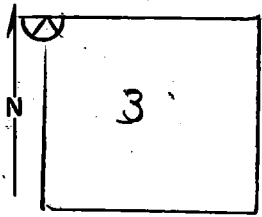
T 3S R. 33E

R.D. Ukiah County Umatilla

Merid. Will

N.F. Umatilla State Oregon

CORNER DIAGRAM



DESCRIBE CORNER MONUMENT FOUND

Original stone: 15" x 12" x 7", 6" above ground  
3 notches visible on E. face and 3 notches on W face.

DESCRIBE BEARING TREES OR OTHER OFFICIAL ACCESSORIES FOUND

Stone mound: 3ft. in diameter, 1 ft. high covered with moss.  
Post 3" x 3", 3' high is set in mound, and has a Harris-Pine postern dated 5/24/66.

PHOTO IDENTIFICATION DATA

Photo No. \_\_\_\_\_  
Filed At. \_\_\_\_\_  
Object Ident. \_\_\_\_\_  
Ident. By \_\_\_\_\_  
*Signature*

DESCRIBE CORNER LOCATION RELATIVE TO NEAR-BY FEATURES, ALSO HOW TO REACH CORNER

To find corner: follow bdry. fence E. from Pearson rd. to a fence corner where an iron fence goes N. about 200 ft. E. of this pt. the bdry. fence jogs S. At. which pt. continue E. on a blazed line to the corner about 100 yds from jog in fence. From corner, fence is S. Sch. distant. A willow thicket is in vicinity of corner.

PLANE COORDINATE POSITION DATA

State \_\_\_\_\_ Zone \_\_\_\_\_  
X \_\_\_\_\_  
Y \_\_\_\_\_  
Estab. By \_\_\_\_\_  
*Agency*

*Signature:*  
Mike Lilly

*Title* Eng. Aide *Division* USFS *Headquarters* Umatilla-S.O.

*Date* 8-4-69

7100-52  
REV. 65 5

CORNER RECORD (PERPETUATION)

MONUMENT : DESCRIBE NEW MONUMENT SET, OR WORK DONE TO PRESERVE EXISTING MONUMENT

ACCESSORIES : DESCRIBE NEW BT'S WITNESS OBJECTS ETC. ESTABLISHED, OR WORK DONE TO PRESERVE EXISTING EVIDENCE

Painted corner stone and post.  
Put a location poster (54-6) on a 14" Fir bearing S 89° E, 112 lks distant.  
Put location poster (450) on tree at fence S 5.5 ch. of corner.  
Painted arrow on tree and painted fence post red.

Work Done By Mike Lilly Title Engr Aide Date 8/4/69 State Registration No. or Agency US Forest Service

Certified Cor. Record Prepared ? Yes  No  Filed At: \_\_\_\_\_ Date \_\_\_\_\_

REMARKS

Index File No. A-13 T. 3S R. 33E M. Will. Tract or Surv. No. \_\_\_\_\_ Cor. A-13