

USDA-FOREST SERVICE

Index

File No.

R-5

CORNER RECORD (SEARCH)

(Ref. FSM 7151.4)

Tract or

Survey No.

Sec 20

Cor.

No.

SW CC

T

3S

R.

32E

R.D.

Ukiah

County

Umatilla

Merid.

Willamette

N.F.

Umatilla

State

Oregon

CORNER DIAGRAM

T3S

R31E R32E

S 24

S20  
S29

CC  
AM

N

DESCRIBE CORNER MONUMENT FOUND

None.

DESCRIBE BEARING TREES OR OTHER OFFICIAL ACCESSORIES FOUND

A 25" dia Red Fir N78°E 49.5 ft dist tagged S76°W 75 lk- (old BT dead healed blaze).  
A 28" dia P. Pine S40°E 54.8 ft dist tagged N38°W 83 lk-(old BT, open blaze with visible scribing).

PHOTO IDENTIFICATION DATA

Photo No. \_\_\_\_\_

Filed At. \_\_\_\_\_

Object Ident. \_\_\_\_\_

Ident. By \_\_\_\_\_

Signature

PLANE COORDINATE POSITION DATA

State \_\_\_\_\_ Zone \_\_\_\_\_

X \_\_\_\_\_

Y \_\_\_\_\_

Estab. By \_\_\_\_\_

Agency

DESCRIBE CORNER LOCATION RELATIVE TO NEAR-BY FEATURES, ALSO HOW TO REACH CORNER

Yellow Jacket Road to road #5415, East on road #5415 to 100 ft West of road #050, the North along Skid Road approximately 600 ft to corner at left edge of road.

Signature

William R. Wells

Title

PLS 1106

Division

Headquarters

Date

September 27, 1982

7100-52-(3/68)

**CORNER RECORD (PERPETUATION)**

**MONUMENT: DESCRIBE NEW MONUMENT SET, OR WORK DONE TO PRESERVE EXISTING MONUMENT**

Set 3" brass cap on 2 1/2" x 30" l. pipe 24" in ground with mound of earth.  
 Set steel fence post with 54-4 sign North of corner. Cap marked:

T3S  
 S24 | S20  
 S24 | CC  
 R31E R32E AM  
 1982  
 PLS 1106 . 9

**ACCESSORIES : DESCRIBE NEW BT'S WITNESS OBJECTS ETC. ESTABLISHED, OR WORK DONE TO PRESERVE EXISTING EVIDENCE**

A 10" dia Red Fir bears N65°E 9.6 ft dist marked: T3S R32E S20 CC BT.  
 Blaze faces and 6" band around bearing trees, painted red. Tagged trees with 54-3 and 4 signs where needed. Each new BT has lower blaze, scribed BT, with brass washer stamped PLS 1106 nailed flush.

Work Done By W.R. Wells Title Surveyor Date 9/27/82 State Registration No. PLS 1106  
 or Agency

Certified Cor. Record Prepared? Yes  No  Filed At: Umatilla County Surveyor Office Date

**REMARKS**

Witnessed by: D.L. Kaufman PLS

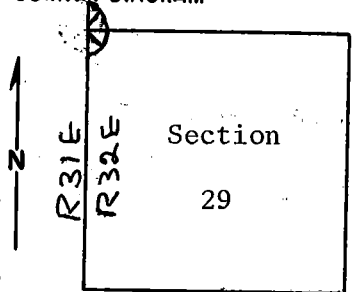
Index R-5  
 File No. \_\_\_\_\_  
 T 3S R. 32E  
 Merid. Willamette

**CORNER RECORD (SEARCH)**

(Ref. FSM 7151.4)

R.D. Ukiah County Umatilla  
 N.F. Umatilla State Oregon  
 Tract or Survey No. 5-79 Cor. No. R-5

**CORNER DIAGRAM**



**DESCRIBE CORNER MONUMENT FOUND**

Material: None found--snow on ground.  
 North-south fence.

**DESCRIBE BEARING TREES OR OTHER OFFICIAL ACCESSORIES FOUND**

A 30-inch white fir blazed on SW side, blaze closed. It has an "Attention" poster on the east side and a B.T. tag over blaze. B.T. tag says S76<sup>OW</sup>, 75 links. Tree has an orange ring painted around it. Tree stands about 30 feet west of logging road and about 50 feet east of fence.

A 30-inch p.pine blazed and scribed on NW side. (cont. in block 12)

**DESCRIBE CORNER LOCATION RELATIVE TO NEAR-BY FEATURES, ALSO HOW TO REACH CORNER**

Approximate corner location is about 1000 feet north of cattle-guard at forest boundary. See Granite Meadows 7.5 minute quadrant map.

**PHOTO IDENTIFICATION DATA**

Photo No. \_\_\_\_\_  
 Filed At. \_\_\_\_\_  
 Object Ident. \_\_\_\_\_  
 Ident. By. \_\_\_\_\_  
*Signature*

**PLANE COORDINATE POSITION DATA**

State \_\_\_\_\_ Zone \_\_\_\_\_  
 X \_\_\_\_\_  
 Y \_\_\_\_\_  
 Estab. By \_\_\_\_\_  
*Agency*

Signature T. Hollamon Title Engineering Technician Division \_\_\_\_\_ Headquarters S. O. Date November 27, 1974

CORNER RECORD (PERPETUATION)

MONUMENT: DESCRIBE NEW MONUMENT SET, OR WORK DONE TO PRESERVE EXISTING MONUMENT

9

ACCESSORIES : DESCRIBE NEW BT'S WITNESS OBJECTS ETC. ESTABLISHED, OR WORK DONE TO PRESERVE EXISTING EVIDENCE

9

10

Work Done By \_\_\_\_\_ Title \_\_\_\_\_ Date \_\_\_\_\_ State Registration No. or Agency \_\_\_\_\_

Certified Cor. Record Prepared ? Yes No Filed At: \_\_\_\_\_ Date \_\_\_\_\_

11

REMARKS

(Block #3, cont.)

Tree has an "Attention" poster on east side and a B.T. tag above scribing. B.T. tag says N38<sup>0</sup>W, 83 links. Tree has orange ring painted around it. Tree stands about 40 feet west of logging road and about 50 feet from fence.

There is an old location poster on a 4-inch 1.p.pine snag about 6 feet east of fence.

12

Index File No. T. R. M. Tract or Surv. No. Cor. 13