

Index  
File No. L-21

**CORNER RECORD (SEARCH)**

(Ref. FSM 7151.4)

Tract or  
Survey No. \_\_\_\_\_  
Cor.  
No. \_\_\_\_\_

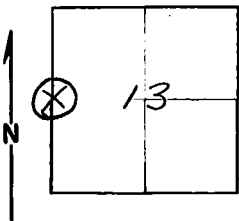
T 3 S. R. 32 E.

R.D. UKIAH County Umatilla

Merid. Will.

N.F. Umatilla State ORE.

**CORNER DIAGRAM**



**DESCRIBE CORNER MONUMENT FOUND**

Stone 13'x8"x7" marked 1/4 AND IN good condition.

**DESCRIBE BEARING TREES OR OTHER OFFICIAL ACCESSORIES FOUND**

30" DBH POND. Pine in good condition  
24" D.B.H. POND. Pine in good condition  
metal tags

**PHOTO IDENTIFICATION DATA**

Photo No. \_\_\_\_\_  
Filed At. \_\_\_\_\_  
Object Ident. \_\_\_\_\_  
Ident. By \_\_\_\_\_

*Signature*

**PLANE COORDINATE POSITION DATA**

State \_\_\_\_\_ Zone \_\_\_\_\_  
X \_\_\_\_\_  
Y \_\_\_\_\_  
Estab. By \_\_\_\_\_

*Agency*

**DESCRIBE CORNER LOCATION RELATIVE TO NEAR-BY FEATURES, ALSO HOW TO REACH CORNER**

Signature  
Melvin Christian

Title

Division

Headquarters

UKIAH

Date

6-8-73

7100-52-(3/68)

CORNER RECORD (PERPETUATION)

MONUMENT : DESCRIBE NEW MONUMENT SET, OR WORK DONE TO PRESERVE EXISTING MONUMENT

9

ACCESSORIES : DESCRIBE NEW BT's WITNESS OBJECTS ETC. ESTABLISHED, OR WORK DONE TO PRESERVE EXISTING EVIDENCE

10

Work Done By \_\_\_\_\_ Title \_\_\_\_\_ Date \_\_\_\_\_ State Registration No. or Agency \_\_\_\_\_

Certified Cor. Record Prepared ? Yes No Filed At: \_\_\_\_\_ Date \_\_\_\_\_ 11

REMARKS

12

Index File No. *L-21* T. R. M. Tract or Surv. No. Cor. 13