

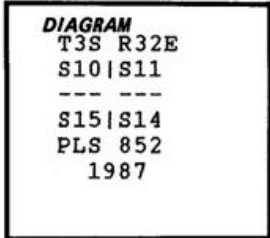
CERTIFIED RECORD OF LAND CORNER MONUMENTATION

Index File No. J-17

History of original corner establishment:

The original corner was established by George Pershin under G.L.O. contract 430, dated March 23, 1882. His record reads:

Set a post four feet long and 4 ins. square and basalt Stone in mound of Stone in open prairie on level for cor. to Sec. 10. 11. 14 and 15. Stone marked with 4 notches on S. and 2 notches on E. edges. Post marked same. also T3S.S11 on N.E. R.32E. S.14 on S.E. S.15 on S.W. and S.10 on N.W. no trees at this cor.



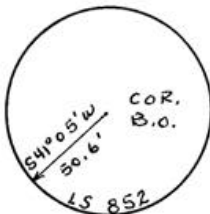
Description of corner evidence found:

Found 18x14x6 basalt stone beneath the intersection of a north-south and east fence lines. Stone has 4 notches on one edge and 2 notches on another edge and was in a stone mound.

Description of monument and accessories established to perpetuate the original location of this corner:

At the position of the original stone, I set a 2" I.D. galvanized iron pipe 30" long with 2 1/2" brass cap stamped as shown in the diagram above. Set pipe 16" into the ground. Buried original stone alongside.

Placed a 3' diameter mound of stone around the monument and set a steel fence post 5' south of the monument with Forest Service Land Survey Monument sign attached. Set aluminum caps stamped as shown below on 1/2" reinforcing bar 24" long. The bearings are true.



2" CAP



1/2" CAPS



I certify the above corner point was perpetuated as hereon described on October 26, 1987.

Witness: Wilma Nell Haddock, Survey Aide

REGISTERED  
PROFESSIONAL  
LAND SURVEYOR

*David L. Haddock*

OREGON  
JULY 12, 1968  
DAVID L. HADDOCK  
852

Office of Surveyor County of Umatilla  
State of Oregon I hereby certify that the within instrument was filed in this office  
for record on the 23 day of November, 1987  
David H. Kline by \_\_\_\_\_  
(COUNTY OFFICIAL) (DEPUTY)

RECEIVED BY  
Umatilla County Surveyor  
Date 12-87  
Rec'd By LA  
No. 87-68-B