

OREGON CORNER RESTORATION FORM

CORNER DESIGNATION: T3S, R31E, E-15

NORTH QUARTER CORNER OF SECTION 10, TOWNSHIP 3 SOUTH, RANGE 31 EAST, W.M.,
UMATILLA COUNTY, OREGON.

PREVIOUS RENEWALS / SURVEYS, ETC.:

T3S R31E WAS ORIGINALLY SUBDIVIDED BY U.S. DEPUTY SURVEYOR GEORGE S. PERSHIN UNDER CONTRACT NO. 319 DATED MARCH 26, 1879. THE NOTES READ, "SET BASALT STONE 14X10X5 ON WEST SIDE OF MOUNTAIN FOR 1/4 SEC COR." DENNIS GAYLORD SEARCHED FOR ORIGINAL CORNER EVIDENCE IN THIS TOWNSHIP THROUGHOUT THE MID TO LATE 1990'S. NO REPORT WAS MADE BY HIM AT THIS LOCATION.

MONUMENT AND ACCESSORIES FOUND:

MADE AN EXTENSIVE SEARCH FOR STONE AS CALLED FOR IN THE NOTES. NOTHING FOUND. THE STEEP ROCKY COUNTRY COMBINED WITH MANY CATTLE AND ELK TRAILS LIKELY ASSISTED IN THE EVIDENCE BEING LOST OVER TIME.

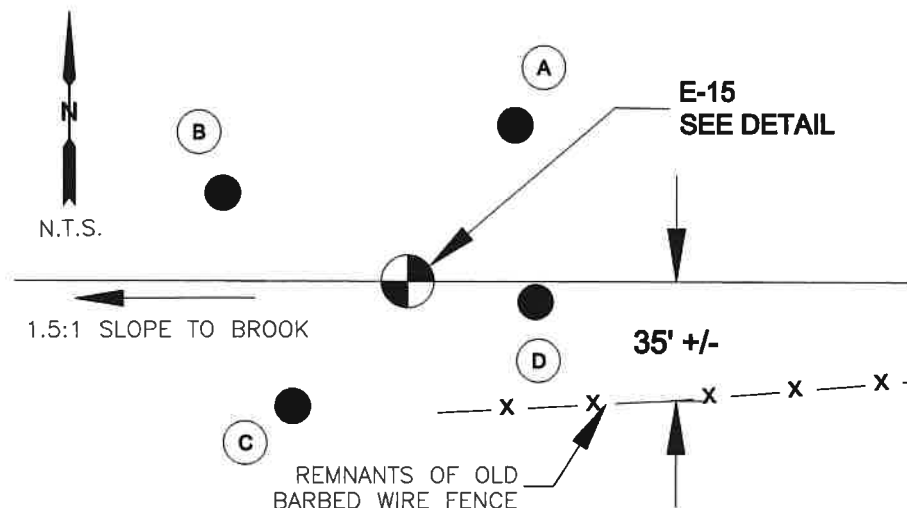
MONUMENT AND ACCESSORIES SET:

SET 2-1/2 INCH BRASS CAP ON 1" (I.D.) X 30" GALVANIZED IRON PIPE, 18" ABOVE GRADE. REINFORCED EXPOSED PIPE WITH STONE MOUND AND SOIL TO CAP. SET 4 REFERENCE MONUMENTS AS SHOWN IN DETAIL BELOW. FOR CORNER LOCATION I HELD THE DOUBLE PROPORTION LOCATION OF THE NORTHWEST CORNER OF SECTION 10 (SEE CORNER FORM E-13) AND THE BRASS CAP SET BY DENNIS GAYLORD AT THE NORTHEAST CORNER OF SECTION 10. CORNER WAS SET BY SINGLE PROPORTION BETWEEN THE TWO MONUMENTS. SEE BELOW DETAIL FOR ADDITIONAL INFORMATION. ALSO SEE RECORD OF SURVEY FILED CONCURRENTLY WITH THIS CORNER RESTORATION FORM.

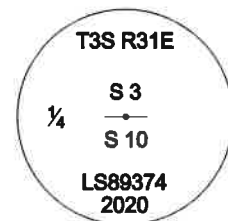
REFERENCES:

- (A) SET 5/8" X 30" STEEL REBAR WITH YELLOW PLASTIC CAP MARKED "UCPWD LS89374", CORNER BEARS S 34°44'32" W, 53.80'.
- (B) SET 5/8" X 30" STEEL REBAR WITH YELLOW PLASTIC CAP MARKED "UCPWD LS89374", CORNER BEARS S 64°11'46" E, 57.82'.
- (C) SET 5/8" X 30" STEEL REBAR WITH YELLOW PLASTIC CAP MARKED "UCPWD LS89374", CORNER BEARS N 42°32'34" E, 47.89'.
- (D) SET 5/8" X 30" STEEL REBAR WITH YELLOW PLASTIC CAP MARKED "UCPWD LS89374", CORNER BEARS N 80°39'36" W, 36.77'.

DIAGRAM:



E-15 DETAIL:



LOCATION AND COMMENTS:

OCRS, PILOT ROCK-UKIAH ZONE
N:120,460.03 E:183,027.68
LATITUDE: 45°19'38.66007"
LONGITUDE: 118°55'34.30087"

FIRM/AGENCY:

UMATILLA COUNTY PUBLIC WORKS DEPARTMENT
3920 WESTGATE, PENDLETON, OREGON 97801
PARTY CHIEF: MATT KENNY
WITNESS: TROY ALDERSON

BEARING BASE:

REPORTED BEARINGS ARE GRID
OCRS PILOT ROCK-UKIAH ZONE

**REGISTERED
PROFESSIONAL
LAND SURVEYOR**

Matthew Patrick Kenny

OREGON
JAN 12, 2016
MATTHEW PATRICK KENNY
89374PLS

RENEWS: 6-30-21