

Form 874-9

U. S. DEPARTMENT OF AGRICULTURE  
FOREST SERVICE



Umatilla NATIONAL FOREST

CORNERS OF THE PUBLIC SURVEY

T. 3-4 N. R. 37 E. W. Mer.

Section Corner common to Sections  
33 34 3 and 4

DESCRIPTION OF CORNER

Corner consists of a stake, good condition

Dimension above ground 5 inches.

Sketch grooves, letters, figures, or notches, on proper face or edge.

CARDINAL POSITION

DIAGONAL POSITION



N W S E

NW SW SE NE

Mound of ----- is located -----

Pits are located -----

Sketch markings of Bearing Trees (or Rocks) in proper box and fill blanks below, giving bearings from Corner to Trees and Distances in Links.

T<sup>3N</sup>  
R<sup>37</sup>  
S.<sup>33</sup>

T<sup>3N</sup>  
R<sup>37</sup>  
S.<sup>34</sup>

T<sup>4N</sup>  
R<sup>37</sup>  
S.<sup>33</sup>

BT

BT

BT

Species W.F. W.F. W.F.

Diameter 10" 12" 14"

Bearing S55E S14E N.55W.

Distance 1/6 C. 1/7C. 1/10ch.

Do you believe this to be a genuine Land Office Corner? **Yes.**

If not, why? -----

Albert Baker

Signature.

9-19-27

Date.

Forest Ranger

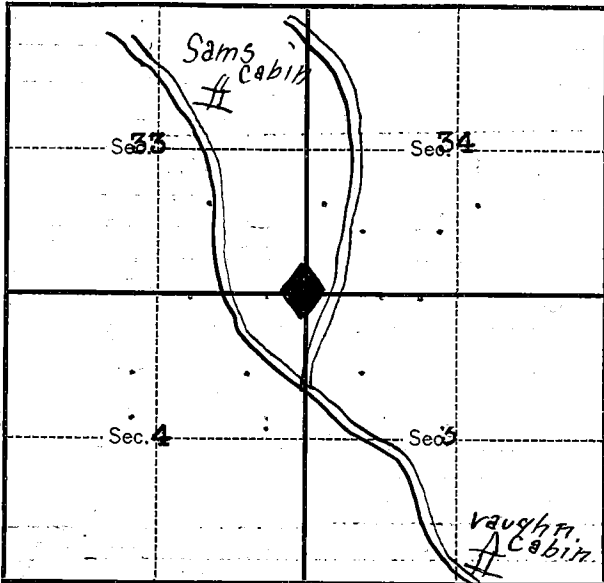
Title.

8-3027

T. 3-4 N. R. 37 E. W. Mer.

8-3027

(Make sketch of topography near Corner.)



Metal Location Poster is on a -----  
tree ----- inches diameter, on the -----  
side of -----  
from which this Corner bears -----  
----- chains distant.

Give any further facts which will aid in finding this  
Corner again.

**Witness tree for Sec. 3 is dead.**

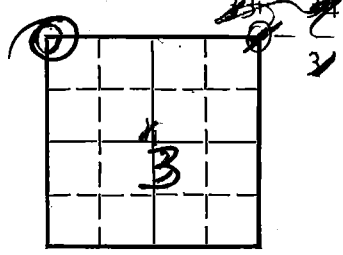
**Corner is in forks of road leading  
to the Vaughn cabin**

LAND CORNER RECORD

22 5680.2

1. T 3N R 37E No. A 13 Cor. Sec Mer. Will State Oregon N. F. Umatilla Dist. Pendleton **3**

2. Corner Status



3. Original Description Resurvey Vol. 180 Page 15 Where Recorded GLO year 1879

4. Description of Corners: Resurvey set fir post on level for corner to sections 3, 4, 33, & 34.

See Mon. ? file.

- Tamarack 12" di. brs. N 34° E 54 lks. dist
- Tamarack 11" di. brs. S 46° E 20 lks. dist.
- Fir 18" di. brs. S 52° W 43 lks. dist.
- Tamarack 14" di. brs. N 62° W 31 lks. dist.

5. Investigation Notes: Found 8" L.P. with N.F.B. sign tag on south face. scribing on sign by L.D. Bailey 8-30-57, has 5' 8, sec. cor 3 & 4 in upper left hand corner.

Area has been logged. No B.Ts. Unable to locate sec. cor. referred to by Bailey on tag.

If Bailey's notes could be found many corners might be located. He has initialed quite a few signs on this district.



7. Photo Identification  
Photo No. UM 32B-5  
Ident. By: \_\_\_\_\_

8. Plane Coordinate Position Data  
State \_\_\_\_\_ Zone \_\_\_\_\_  
X \_\_\_\_\_  
Y \_\_\_\_\_  
Estab. By \_\_\_\_\_  
Field Book No. \_\_\_\_\_  
Where Filed \_\_\_\_\_

9. Evaluation  
Authentic \_\_\_\_\_  
Needs Verif. X Monument NO  
Re-estab. Survey  
Land Status \_\_\_\_\_

6. Signed A. Galbraith Title Range Tech. Date 5-14-64

*Handwritten signature or mark.*

PERPETUATION RECORD

10. Monument:

11. Accessories

Field Book \_\_\_\_\_ Page \_\_\_\_\_

12. Set By \_\_\_\_\_ Title \_\_\_\_\_

License # \_\_\_\_\_ Agency \_\_\_\_\_ Date \_\_\_\_\_

13. Recorded By \_\_\_\_\_ Volume \_\_\_\_\_ Page \_\_\_\_\_  
(Agency)

(Date) (City) (County) (State)

14. Remarks:

A-13

USDA-FOREST SERVICE

Index File No. 2-13

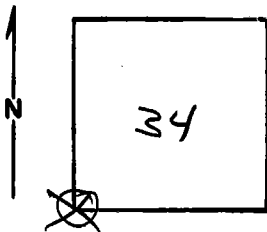
CORNER RECORD (SEARCH)  
(Ref. FSM 7151.4)

Tract or Survey No. C Cor. No. 2-13

T 4 N R. 37 E R.D. \_\_\_\_\_ County \_\_\_\_\_

Merid. \_\_\_\_\_ N.F. \_\_\_\_\_ State \_\_\_\_\_

CORNER DIAGRAM



DESCRIBE CORNER MONUMENT FOUND

found 24" x 10" x 4" stone, 14" in ground. (No record of it,) It fit fergusons survey and he accepted it to continue his retracement survey. (See Monumentation file) 10-78

DESCRIBE BEARING TREES OR OTHER OFFICIAL ACCESSORIES FOUND

None found.  
No new B.I.T.'s set.

PHOTO IDENTIFICATION DATA

Photo No. \_\_\_\_\_  
Filed At. \_\_\_\_\_  
Object Ident. \_\_\_\_\_  
Ident. By \_\_\_\_\_

Signature

PLANE COORDINATE POSITION DATA

State \_\_\_\_\_ Zone \_\_\_\_\_  
X \_\_\_\_\_  
Y \_\_\_\_\_  
Estab. By \_\_\_\_\_

Agency

Signature

TGH

Title

Division

Headquarters

Date

2-9-79

7100-52-(3/68)

5

**CORNER RECORD (PERPETUATION)**

**MONUMENT : DESCRIBE NEW MONUMENT SET, OR WORK DONE TO PRESERVE EXISTING MONUMENT**

9

**ACCESSORIES : DESCRIBE NEW BT's WITNESS OBJECTS ETC. ESTABLISHED, OR WORK DONE TO PRESERVE EXISTING EVIDENCE**

10

Work Done By \_\_\_\_\_ Title \_\_\_\_\_ Date \_\_\_\_\_ State Registration No. or Agency \_\_\_\_\_

Certified Cor. Record Prepared ? Yes No Filed At: \_\_\_\_\_ Date \_\_\_\_\_

11

**REMARKS**

12

Index File No. T. R. M. Tract or Surv. No. Cor. 13  
U.S. G.P.O. 1977-725-576/586