

OREGON CORNER RESTORATION FORM

COUNTY: Umatilla. DATE: 12/31/07

CORNER DESIGNATION: T3N., R33E., W.M.. Z-09, Closing Corner of Sections 32 and 33.

PREVIOUS RENEWALS/SURVEYS ETC.: Corner originally established by Currin and Noland, U.S. Deputy Surveyors, under Special Contract dated May 4, 1887. Original notes state: "set post 4 ft. long by 4 ins. square, 24 ins. in the ground for corner to secs. 32 and 33, marked CC T3N R33E on N., S33 on E. and S32 on W. faces with 4 notches on E. and 2 notches on W. edges and dug pits 18 X 18 X 12 ins. N. E. and W. of post 5 1/2 ft. dist. Raised mound of earth 2 ft. high 4 1/2 ft. base around it". Note: The Currin & Noland Survey superceded earlier GLO surveys. E.W. Macomber recovered remains of the post February 4, 1902, and set "5 small stones" and pieces of charred stake underneath. Reference: Record of Private Surveys, Survey No. 135. L.E. Wilkes, noted a fence, extending North, 138.93 feet East from the section corner common to Sections 4 & 5, during his resurvey of the Diminished Boundary of the Umatilla Indian Reservation in 1917.

State Highway Map No. 5B-11-3, dated June, 1937, calls for a "Mkd Rock".

MONUMENT AND ACCESSORIES FOUND: For the actual closing corner, held point just South of railroad tie fence corner as best remaining evidence of the closing corner. Made a extensive search, digging around the railroad tie fence corner for remains of a stone, small stones, or post remains without success.

MONUMENT MARKING DETAIL:

T3N R33E
CC
S32|S33
S4
T2N R33E
2007
PLS 1106

MONUMENT SET:

I established and monumented the true intersection point, North 00°12'50" West, 3.94 feet from the accepted point for the actual closing corner. See Record of Survey filed concurrently with this Corner Record. At the corner point, set a 2 3/8" brass cap on 1 1/4" galvanized iron pipe, with cap approximately 2 inches above ground level.

New Accessories:

A 5/8" x 30" iron rebar with red plastic cap stamped "OR PLS 1106, WA PLS 17372", bears North 00° East, 23.3 feet.

A 5/8" x 30" iron rebar with red plastic cap stamped "OR PLS 1106, WA PLS 17372", bears North 00° East, 63.3 feet.

A 3/4" brass washer stamped "PLS 1106", 2 feet above ground in railroad tie with "witness" sign attached, bears South 65° East, 6.8 feet.

The Northwest Corner of Section 4, T2N, R33E, a brass cap monument per BLM dependant resurvey, bears North 89°46'59" West, 139.26 feet, and the North one-quarter Corner of Section 4, a brass cap monument per BLM dependent resurvey, bears South 89°46'59" East a distance of 2510.70 feet.

Attached bearing object signs to all rebar accessories and nailed bearing object sign by brass washer accessory.

LOCATION AND COMMENTS:

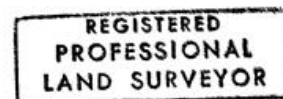
Corner is located approximately 2040 feet South of the centerline of Highway 11 along an old fence line and 3.5 feet North of a railroad tie fence corner post.

FIRM: William R. Wells, PLS
P.O. Box 1696
Pendleton, OR 97801

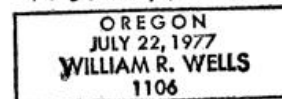
COMPASS DECLINATION: 18° East

Surveyor's Seal

Witnesses: Jason Wells, LSIT and Micah Engum
3N33Z-9



William R. Wells



renews 6-30-08