

CERTIFIED RECORD OF LAND CORNER MONUMENTATION

HISTORY OF ORIGINAL CORNER ESTABLISHMENT:

The corner was originally surveyed by Daniel Chaplin under contract No. 107, dated Sept. 21, 1864 and approved Jan. 24, 1865. His notes state:
Set post for 1/4 Sec. Cor. in mound of Earth with charred stake, pits and etc. as per instructions.

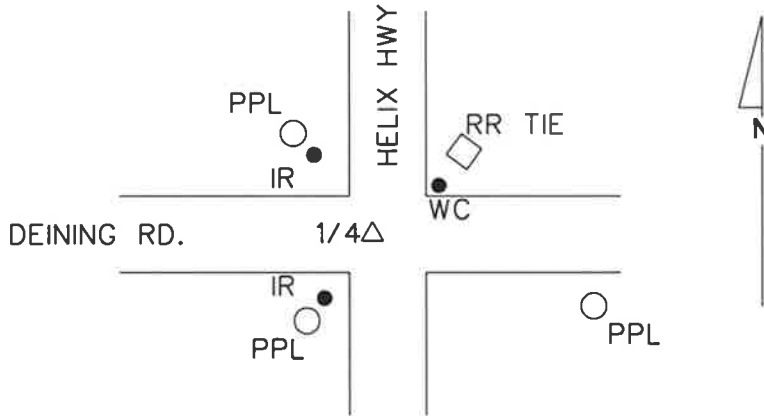
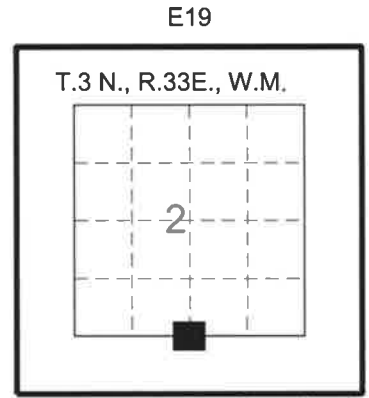
SUBSEQUENT CORNER ESTABLISHMENT:

Robert English reestablished the corner in 2012 and filed a corner restoration form along with Survey No. 12-094-C. His notes state:
Monuments and Accessories Found: None

Monuments Set: A railroad spike at the corner position, in the South bound lane of the Helix Hwy. at the intersection with the centerline of Deining Rd.

References Set:

- A 5/8" x 30" iron rebar w/RPC *43406 lies N23° 40'W, 46.39', at a power pole.
- A 1 1/8" galvanized iron pipe with 2 1/2" brass cap Witness Corner lies N 45° 50' E, 43.01', at the surface.
- A pink "Deep One" magnet by Berntsen lies S48° 50'E, 58.29', 1.6' deep.
- A 5/8" x 30" iron rebar w/RPC *43406 lies S24° 10'W, 41.39', at a power pole.



RECEIVED BY
Umatilla County Surveyor
Date: 8/4/17
Rec'd By: CT
No.: 17-099-R

T3N R33E

1/4 $\frac{S2}{S11}$ WC

43406LS

2012

DESCRIPTION OF CORNER EVIDENCE FOUND:

Found railroad spike in center of south bound lane of the Helix Hwy., (OR 335), spike is bent and top half laying horizontal and flattened to surface of pavement, top has cross and punchmark. I removed the spike from road and found that bottom half was vertical and the hole left after removing spike was also vertical, not deformed, and matched positions of found accessories.

From which:

- A found 2 3/8 ins. diam. brass cap, down 1 ins. in a small ditch near face of railroad tie post, bears at record (N 45° 50' E, 43.01'), marked as shown above at right:
 - A found 1 1/2 ins. diam. red plastic cap, down 3 ins., 1 ft. NE'ly of power pole, marked: ORPLS43406 WAPLS44338, bears at record (S24° 10'W, 41.39').
 - A found 5/8 ins. diam. iron rod, no cap, at ground level, 0.8 ft. SE'ly of power pole, bears at record (N23° 40'W, 46.39').
- NOTE: I did not excavate nor recover the magnet in SE quadrant.

OREGON DEPARTMENT OF TRANSPORTATION

T3N R33E

1/4 $\frac{S2}{S11}$

2017

PLS51277

DESCRIPTION OF MONUMENT AND ACCESSORIES I ESTABLISHED TO PERPETUATE THE ORIGINAL LOCATION OF THIS CORNER:

At position of found railroad spike:

Set a 3 1/4 ins. diam. alum. cap on a 5/8 ins. diam. by 30 ins. long iron rod (rebar), driven 23 inches in the ground, placed inside a 10 ins. diam. cast iron monument box. Cap is 3 ins. below surface of road. Marked as shown:

OR STATE PLANE NORTH ZONE
NAD83(2011)(EPOCH:2010.0000) INT. FEET
N 769028.67
E 8673601.42

Witnesses:
Chuck Longfield
Peter Elder

I hereby certify that the above corner position was perpetuated as hereon described on July 12, 2017.

REGISTERED
PROFESSIONAL
LAND SURVEYOR

OREGON
JULY 13, 1999
PETER C. ELDER
51277

RENEWS: 12/31/2017

	Section	HWY11 - HELIX		
	Highway	OR 335, HAVANA-HELIX HWY.		
	County	Umatilla	Scale	NTS
	Purpose	Corner Restoration	Date	July 13, 2017
	File			