

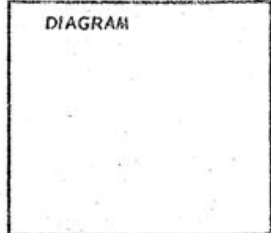
E-25
H-179
E-2-

CERTIFIED RECORD OF LAND CORNER MONUMENTATION

Restoration of SE Cor Sec 1, T3N, R32 E W M

History of original corner establishment:

Wood post set in



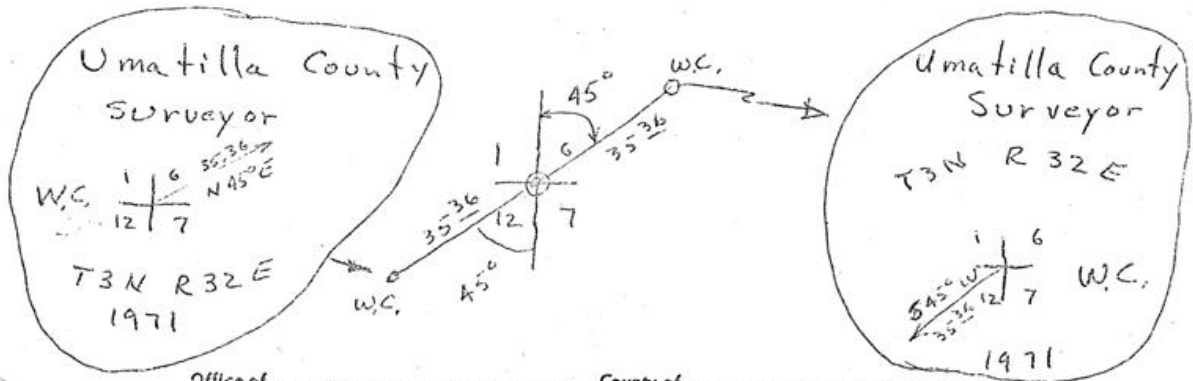
E-25

Description of corner evidence found: Dug and found Charcoal at intersection of 2 county Roads

Donald A. Stuller

Description of monument and accessories I established to perpetuate the original location of this corner

to land 12 Range 32 E
6 and 7 Range 33 E
in township 3 North.
I set 5/8 x 30" iron Pin for the corner.
I also set 2 ~~witness~~ witness corners as shown



Office of County of
State of , I hereby certify that the within instrument was filed in this office
for record on the day of , 19..... , at o'clock m., (signed)
..... by
(COUNTY OFFICIAL) (DEPUTY)