

**OREGON CORNER RESTORATION FORM**

Section: 6  
 Township: 3 North  
 Range: 33 East of the Willamette Meridian  
 County: Umatilla  
 Date: 07/24/02

Corner Indexing Information: Township 3N Range 33E Corner Code A-1 (Willamette Meridian)

Additional Identifier: (e.g. BLM designation for the corner, street intersection, plat name, block, lot, etc.)

Northwest corner Section 1

Oregon Plane Coordinates: N: 773936.006 E: 8649732.120

Zone: North Order: second Datum: NAD83-91 Convergence: 1°14'39.3" Scale Factor: 0.99986581

Previous Renewals/Surveys, etc.:

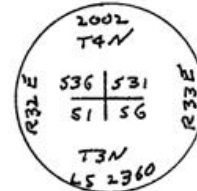
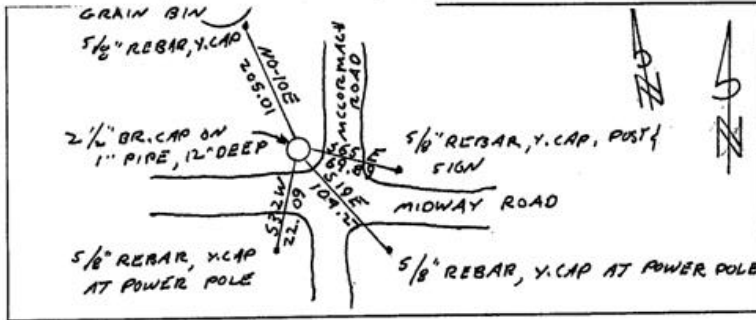
Corner was originally set by Thompson in 1864 under contract no. 106 as a post, mound and pits. An undated Northern Pacific Railway map shows the corner as 2142' West of the railroad centerline. No other history.

Monument(s) & Accessories Found (Condition & Source):

Corner not found. Monument set by double proportionate measurement; falls 2150' West of apparent railroad bed centerline.

Monument Set (Procedures & Description):

Monument Detail:

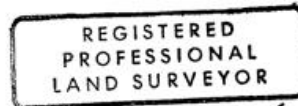


Location & Comments:

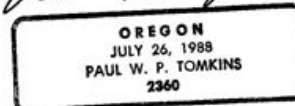
Compass Declination:  
 19° East

Surveyor's Seal

Firm/Agency: Tomkins Land Surveying, Inc.  
 20 E. Poplar, Suite 204  
 Walla Walla WA 99362



*Paul W. P. Tomkins*



*renews 6/30/09  
 2/11/03*

Party Chief: PWPT  
 Notes:  
 Witness:

RECEIVED BY

Umatilla County Surveyor

Date 2-03

Rec'd By XX

No. 03-25-9