

OREGON CORNER RESTORATION FORM

COUNTY: Umatilla DATE: 06/29/06

CORNER DESIGNATION: 3N31, V-3, The South One-Quarter Corner of Section 30.

PREVIOUS RENEWALS/SURVEYS ETC.: Corner originally established by D.S. Payne, under Contract No. 100, dated August 1, 1861. Record states: Set charred stake with mound, trench and pits as per insts. For 1/4 sec. corner.

MONUMENT AND ACCESSORIES FOUND: None. There was a fence corner with fences East-West and South at the corner area, but the fences have been removed for some years. I spoke with Harriet Isom, neighboring landowner and to Bill Dick, who farmed the land when the fences were standing. As can be expected, the old fence location cannot be definitely remembered at this time, because of lack of features in the corner area. There is still a field line extending West and South from the corner area. We found one old fence post near the Northeast corner of the Isom farm building compound, which Harriet Isom believes to be part of the old East-West fence, now removed.

MONUMENT MARKING DETAIL:

T3N R31E
1/4 S30
S31
2006
PLS 1106

MONUMENT SET:

Re-established corner by holding a line between the reestablished Northwest corner of Section 31 and the old standing fence post near the Northeast corner of the Isom farm building compound, and projecting that line East to intersect the existing field line extending South. This position fits the existing field lines West and South and in my opinion is the best solution to reestablish this obliterated corner point. At the reestablished corner position, set a 2 3/8" brass cap on 1 1/4" by 30" galvanized iron pipe with cap 15" below ground level. Monument marked as shown in Monument Marking Detail.

From which:

A Silver Deep-1 magnet buried 22" below ground bears North 63 1/2° East, 30.2 feet.

A Blue Deep-1 magnet buried 22" below ground bears South 40° East, 36.2 feet.

A Purple Deep-1 magnet buried 22" below ground bears South 44 1/2° West, 31.3 feet.

A Orange Deep-1 magnet buried 22" below ground bears North 30° West, 38.9 feet.

Buried bearing object signs with magnets. Set steel fence post with witness sign 1.5 feet West of monument.

LOCATION AND COMMENTS: Corner is located in a actively farmed field at the intersection of field lines South and West.

OREGON STATE PLANE COORDINATE, North Zone, NAD 83(91), International Feet:

N = 746644.94

E = 8589122.22

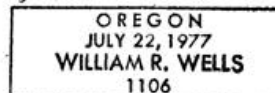
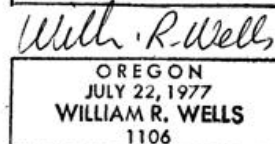
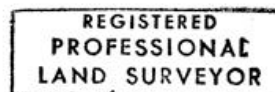
FIRM: William R. Wells, PLS
P.O. Box 1696
Pendleton, OR 97801

COMPASS DECLINATION: 18° East

Surveyor's Seal

Witnesses: Jason Wells, LSIT

/3N31V3



Renews 6-30-14 N-462-C