

OREGON CORNER RESTORATION FORM

COUNTY: Umatilla DATE: 04/19/06

CORNER DESIGNATION: 3N31, R-15, The South Quarter Corner of Section 22.

PREVIOUS RENEWALS/SURVEYS ETC.: Corner originally established by D. S. Payne, under Contract No. 100, dated August 1, 1861. Record states: Set charred stake with mound, trench and pits as per insts. for 1/4 sec. corner.

MONUMENT AND ACCESSORIES FOUND: None.

MONUMENT MARKING DETAIL:

T3N R31E
1/4 S22
S27
2006
PLS 1106

MONUMENT SET:

Re-established corner position at proportional departure between the reestablished Northwest and Northeast corners of Section 27. For latitude, I held the existing field berm extending West from the corner point. At the reestablished corner position, set a 2 3/8" brass cap on 1 1/4" x 30" galvanized iron pipe with cap 15" below ground level. Monument marked as shown in monument marking detail.

From which:

A silver Deep-1 magnet buried 22" below ground level bears North 46 1/2° East, 30.6 feet.

A 3/4" brass washer stamped "PLS 1106" 1 foot above ground in UECA power pole No. 224000 bears South 02° West, 106.1 feet.

A purple Deep-1 magnet buried 22" below ground level bears South 50° West, 34.4 feet.

A orange Deep-1 magnet buried 22" below ground level bears North 34 1/2° West, 38.1 feet.

Buried bearing object signs with all magnets. Nailed bearing object sign to power pole. Set steel fence post with witness sign attached 1 foot North of the monument.

LOCATION AND COMMENTS: Corner is located in farmed fields with a field berm extending West and a power pole line North and South.

OREGON STATE PLANE COORDINATE, North Zone, NAD 83(91), International Feet:

N = 752035.95
E = 8604916.43

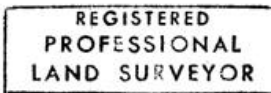
FIRM: William R. Wells, PLS
P.O. Box 1696
Pendleton, OR 97801

COMPASS DECLINATION: 18° East

Surveyor's Seal

Witnesses: Jason Wells, LSIT

/3N31R15



William R. Wells
OREGON
JULY 22, 1977
WILLIAM R. WELLS
1106

renews 6-30-08