

OREGON CORNER RESTORATION FORM

COUNTY: Umatilla DATE: 4/09/15

CORNER DESIGNATION: The North One-Quarter Corner of Section 14, Township 3 North, Range 31 East, J-19.

PREVIOUS RENEWALS/SURVEYS ETC.: Corner originally established by D.S. Payne, under Contract No. 100, dated 8/1/1861, notes state: Set charred stake with mound trench and pits as per instrs. for 1/4 sec corner. Corner re-established by John Kimbrell, in 1900 survey recorded in Private Survey Book 1, Pages 424 and 425. Kimbrell "set stake".

MONUMENT AND ACCESSORIES FOUND: None.

MONUMENT MARKING DETAIL:

T3N R31E
1 S11
4 S14
2015
PLS 54657

MONUMENT SET:

Held a field berm intersection with field berms East-West and South as best remaining evidence of the corner and set a 2 3/8" brass cap on a 1 1/4" x 30" galvanized iron pipe, top 20" below ground level, stamped as shown in "Monument Marking Detail".

From which:

- A silver deep-1 magnet, 20" below ground level, bears North 51° East, 32.1 feet.
- A pink deep-1 magnet, 20" below ground level, bears South 54° East, 24.7 feet.
- A blue deep-1 magnet, 20" below ground level, bears South 49° West, 28.0 feet.
- An orange deep-1 magnet, 20" below ground level, bears North 51° West, 36.4 feet.

Buried bearing object tags with magnets.

LOCATION AND COMMENTS: At the intersection of field berm East-West and faint berm South.

OREGON STATE PLANE COORDINATE, North Zone, NAD 83(91), International Feet:

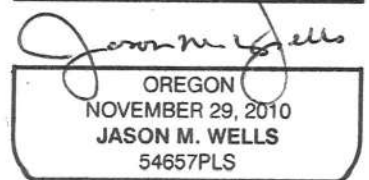
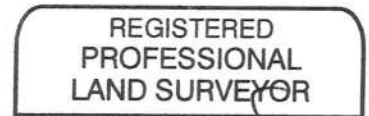
N = 762710.71
E = 8610038.62

FIRM: Wells Surveying
P.O. Box 1696
Pendleton, OR 97801

COMPASS DECLINATION: 18° East Surveyor's Seal

Witnesses: Jason Wells, PLS
Dean Roy

/3N31J19



RENEWS: 6-30-16

15-052-c