

**OREGON CORNER RESTORATION FORM**

COUNTY: Umatilla DATE: 4/13/15

CORNER DESIGNATION: The North One-Quarter Corner of Section 12, Township 3 North, Range 31 East, E-23.

PREVIOUS RENEWALS/SURVEYS ETC.: Corner originally established by D.S. Payne, under Contract No. 100, dated 8/1/1861, notes state: Set charred stake with mound trench and pits as per instrs. for 1/4 sec corner.

MONUMENT AND ACCESSORIES FOUND: None.

MONUMENT MARKING DETAIL:

T3N R31E  
1 S1  
4 S12  
2015  
PLS 54657

MONUMENT SET:

Held intersection of Hampton Road North-South with a field berm extending West as best remaining evidence of the original corner location. At re-established corner position, set a 2 3/8" brass cap on a 1 1/4" x 30" galvanized iron pipe, with top 10" below road surface, stamped as shown in "Monument Marking Detail".

From which:

- A 5/8" x 24" rebar with a 1 1/4" purple plastic cap stamped "Wells Surveying PLS 54657", 1" above ground level, in road bank, bears North 15° East, 72.9 feet.
  - A 5/8" x 24" rebar with a 1 1/4" purple plastic cap stamped "Wells Surveying PLS 54657", 1" above ground level, in road bank, bears North 31° East, 29.5 feet.
  - A 5/8" x 24" rebar with a 1 1/4" purple plastic cap stamped "Wells Surveying PLS 54657", 1" above ground level, in road bank, bears South 13° East, 39.7 feet.
  - A 3/4" brass washer stamped "PLS 1106", 1.5 feet above ground level in railroad tie H brace, bears North 86° West, 22.1 feet.
- Wired bearing object tags to rebar. Nailed bearing object tags by washer on railroad tie.

LOCATION AND COMMENTS: At the intersection of North/South road (Hampton Road) with a field berm West.

OREGON STATE PLANE COORDINATE, North Zone, NAD 83(91), International Feet:

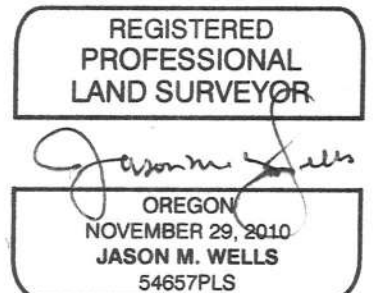
N = 767984.01  
E = 8615286.65

FIRM: Wells Surveying  
P.O. Box 1696  
Pendleton, OR 97801

COMPASS DECLINATION: 18° East Surveyor's Seal

Witnesses: Jason Wells, PLS  
Dean Roy

/3N31E23



RENEWS: 6-30-16

15-052-C