

OREGON CORNER RESTORATION FORM

SECTION 36,31,6,1 TOWNSHIP 4&3 NORTH RANGE 29&30 EAST Z-25

COUNTY : UMATILLA DATE 11/01

CORNER DESIGNATION

SECTION CORNER

CONDITION REPORT ONLY
 NOT FOUND
 RENEWED
 UNCOVERED
 SURVEYED IN
 REFERENCED

PREVIOUS RENEWALS / SURVEYS, ETC.

ORIGINALLY SURVEYED IN 1859 BY GATES UNDER CONTRACT #84. HE SET A POST IN A MOUND OF EARTH.

IN 1998 EDWARDS SET A 1" x 30" IRON PIPE WITH A 2 3/8" BRASS CAP BY PRPORTION FOR EASTINGS AND CENTER LINE OF COUNTY ROAD NORTHINGS.

MONUMENTS AND ACCESSORIES FOUND: CONDITION AND SOURCE

AN ALUMINUM TAG #951 ON A POWER POLE LIES N 46°46'55" W, 54.34 FEET.

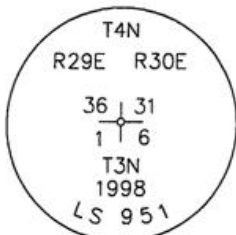
AN ALUMINUM TAG #951 ON A POWER POLE LIES S 69°16'40" W, 43.56 FEET.

A 5/8" x 30" IRON ROD WITH A YELLOW PLASTIC CAP MKD "#951" LIES S 64°28'30" W, 43.28 FEET.

A 5/8" x 30" IRON ROD WITH A 2" ALUM. CAP MKD "#951" LIES N 0°00'18" W, 136.96 FEET.

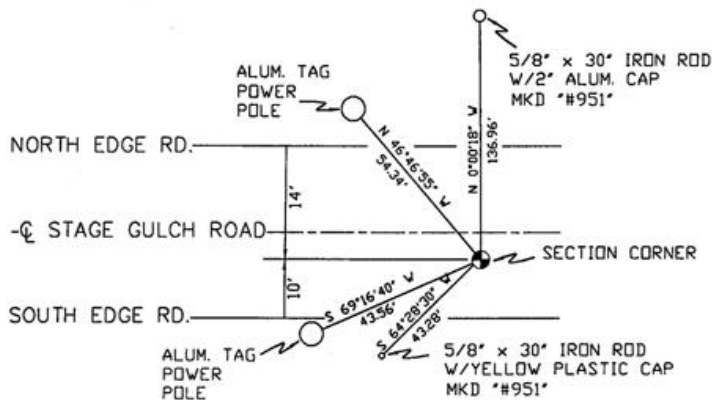
MONUMENT DETAIL

SKETCH



NAD 83/91
 OREGON STATE PLANE
 INTERNATIONAL FEET

772526.4794
 8553646.7967



MONUMENT SET (PROCEDURES AND DESCRIPTION)

NEW ACCESSORIES FROM WHICH

LOCATION AND COMMENTS

AT INTERSECTION OF OLD STAGE GULCH ROAD AND LARGE POWER LINE.

COMPASS DEC.

FIRM/AGENCY
 PRIMM LAND SURVEYING
 P.O. BOX 1322
 HERMISTON, OREGON 97838

PARTY CHIEF
 KEITH P. PRIMM

NOTES

WITNESS
 BRIT L. PRIMM

RECEIVED BY

Umatilla County Surveyor

Date 12-01

Rec'd By KE

No. 01-213-Q

SURVEYOR'S SEAL

REGISTERED
 PROFESSIONAL
 LAND SURVEYOR

Brit L. Primm

OREGON
 JULY 13, 1999
 BRIT L. PRIMM
 48509

EXPIRATION DATE:12/31/02