

OREGON CORNER RESTORATION FORM

Section 30
County Umatilla

Township 3N
Date: 3/5/10

Range 29E

Corner Designation: 3N29T3

Center Quarter of Section 30 T3NR29E.

- Condition Report Only
- Not Found
- Remonumented
- Unrecorded
- Surveyed In
- Referenced Out

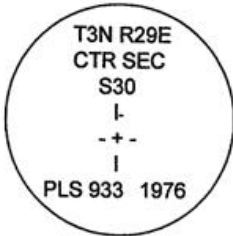
Previous Renewals / Surveys, etc.

Originally Surveyed by Gates in 1859. He set a post in a mound of earth. Krumbein set a Brass Cap in Survey #M-16-Ax.

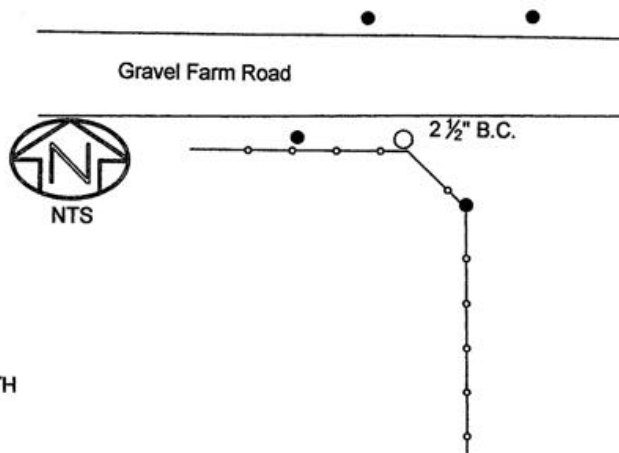
Monuments and Accessories Found: (Condition and Source)

Found Brass cap set by PLS 933.

Diagram



Sketch



NAD 83/91
OREGON STATE PLANE NORTH
INTERNATIONAL FEET

N747961.28
E8525000.38

LAT - 45° 42' 07.2109016" N
LON - 119° 14' 09.19945271" W

Monument (s) Set (Procedures and Description)

None.

References Set:

- A 5/8" Iron rebar w/ypc #43406, lies N 28° W, 28.52'.
- A 5/8" Iron rebar w/ypc #43406, lies N 42° E, 28.58'.
- A PK nail w/brass washer #43406 on a RR Tie fence post, lies S 44°30' E, 19.60'.
- A PK nail w/brass washer #43406 on a Power Pole, lies N 83° W, 10.17'.

Location and Comments

From the intersection of Hwy. 320 and Whitehouse Road, go 1 mile South, and 0.5 miles East along the Gravel farm road.

Compass Declination

17° E

Surveyors Seal

REGISTERED
PROFESSIONAL
LAND SURVEYOR

Robert D. English
OREGON
JANUARY 41, 2005
ROBERT DOUGLAS ENGLISH
43406LS

RECEIVED BY:

Firm / Agency

Survey One, LLC.
P.O. Box 382
Pendleton, OR 97801
(541) 276-2055

Date: 3-10
Rec'd By: PK
No. 10-39-R

RENEWAL DATE: 12/31/11