

OREGON CORNER RESTORATION FORM

SECTION 20 TOWNSHIP 3N RANGE 29E R-7

COUNTY: UMATILLA DATE 8/91

CORNER DESIGNATION

South 1/4 Corner

- CONDITION REPORT ONLY
- NOT FOUND
- RENEWED
- UNRECORDED
- SURVEYED IN
- REFERENCED OUT

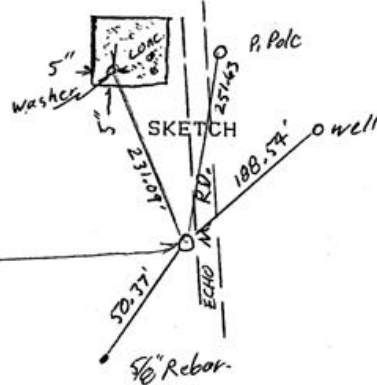
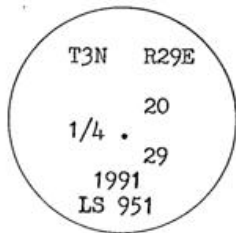
PREVIOUS RENEWALS/SURVEYS, ETC.

Originally surveyed by Gates in 1860 under Contract #84. He set post in mound of dirt. Staebler set 2 1/2" B.C. on 1" Iron pipe in 1974. Co. Sur. #I-158-B.

MONUMENTS & ACCESSORIES FOUND: Condition and Source

Nothing found.

MONUMENT DETAIL



MONUMENT SET (PROCEDURES AND DESCRIPTION)

By retracing Staebler's 1974 Survey I set a 2 3/8" B.C. on 1" x 30" Iron pipe, stamped as above, 4" below surface of gravel runway, of an Agriculture Airport.

NEW ACCESSORIES From which

An Alum. Tag #951 in Power Pole with B.O. sign Bears. N09° 27' 50" E 251.63 feet,  
Center of a well Bears. N48° 15' 20" E 188.54 feet,  
A 5/8" Iron rebar with Alum. tag #951 Bears. S35° 31' 20"W 50.37 feet,  
A 1 1/2" washer is attached on SW corner of chemical loading pad Bears. N21° 19' 50"W 231.09 feet.

LOCATION & COMMENTS

From Junction of Heppner-Echo Hwy. with Echo Meadows Rd., go South 1.2 Miles on Echo Meadows Rd. to corner.

SURVEYOR'S SEAL

COMPASS DEC.  
FIRM EDWARDS SURVEYING  
P.O. BOX 763, HERMISTON,  
OREGON, 97838  
PARTY CHIEF D. EDWARDS  
NOTES  
WITNESS S. BENEFIT

REGISTERED  
PROFESSIONAL  
LAND SURVEYOR

*G. Dennis Edwards*

OREGON  
JULY 16, 1971  
G. DENNIS EDWARDS  
951

RECEIVED BY

Umatilla County Surveyor  
Date 10-91  
Rec'd by KK  
No. 97-93-R