

GPS CONTROL STATION

OREGON STATE PLANE, NORTH ZONE

STATION NAME: 3N29L9 GEODETIC COORDINATE: NAD 83(91)

SECTION: W 1/4 S16 LAT: 45°44'26.36622" N
T. 3N., R. 29 E., W. M. LONG: 119°12'16.95871" W
UMATILLA COUNTY
OREGON

STATE PLANE CO-ORDINATES,
NAD 83-91, INT. FT. :

DATE SURVEYED: March, 1998

N: 758785.988

SURVEYOR: DAVID L. HADDOCK
PLS 852

E: 8532792.640

THETA: 0°55'6.96"

SCALE FACTOR: 0.99994441

ELEV: 627

FIRM: HADDOCK SURVEYING
P. O. BOX 1574
PENDLETON, OR 97801
(541) 276-2174

ELEV. DATUM: NGVD29

HORIZONTAL ORDER: SECOND ORDER,
CLASS I

LOCATION: From main street in the City of Echo go southwest on Oregon highway 320 across the Umatilla River to the intersection with Pedro Lane. The corner is approximately 260 feet north of highway 320 in the field on the Snow Ranch. The cap is approximately 2 feet below the surface.

STATION: Station is a 2 1/4 inch brass disc on a galvanized iron pipe approximately 2 feet below the surface in a farm field.



David L. Haddock



OREGON CORNER RESTORATION FORM

Section 16 Township 3N Range 29E
 County Umatilla Date: May 11, 1998

Corner Designation: **3N29L9**

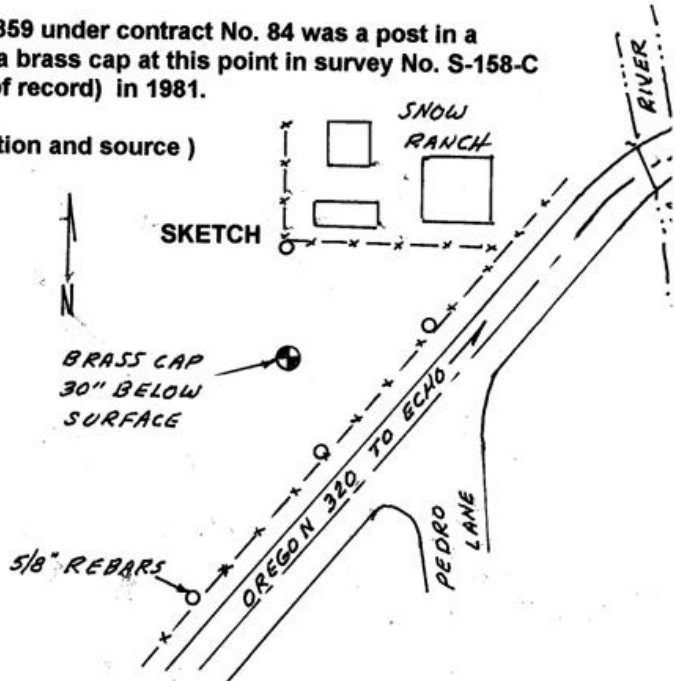
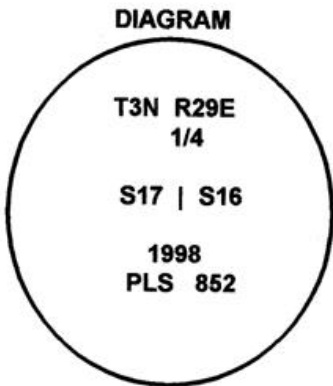
1/4 corner common to sections 16 and 17,
 T3N, R29E, W.M.

Previous Renewals / Surveys, etc.

Corner originally established by Gates in 1859 under contract No. 84 was a post in a mound of earth with charcoal. PLS 933 set a brass cap at this point in survey No. S-158-C at the position of a found wagon axle (not of record) in 1981.

Condition Report Only
 Not found
 Remonumented
 Unrecorded
 Surveyed in
 Referenced out

Monument and Accessories found: (condition and source)
 None.



MONUMENT (S) AND ACCESSORIES SET (Procedures and Description)

Set a 2 1/4 inch brass cap on a 1 1/8" x 30" galvanized iron pipe 30 inches below the surface.

REFERENCES SET:

- A 5/8" x 24" rebar with a 1 1/8" red plastic cap stamped ORLS 852, and WALS 13922 bears N31°37'53"E, 351.67 feet at the foot of a railroad tie fence corner.
- A 5/8" x 24" rebar with a 1 1/8" red plastic cap stamped ORLS 852, and WALS 13922 bears S68°37'36"E, 321.61 feet at the foot of a railroad tie fence post.
- A 5/8" x 24" rebar with a 1 1/8" red plastic cap stamped ORLS 852, and WALS 13922 bears S34°26'28"E, 246.52 feet at the foot of a railroad tie fence post.
- A 5/8" x 24" rebar with a 1 1/8" red plastic cap stamped ORLS 852, and WALS 13922 bears S24°58'30"W, 368.42 feet at the foot of a railroad tie fence post.

Location and comments

Compass Declination

Surveyors Seal

RECEIVED BY:
Umatilla County Surveyor
 Date: 8-9-95
 Rec'd By: KK
 No. 98-155-C

Firm / Agency
 Haddock Surveying
 Address
 P.O. Box 1574
 Pendleton, Or. 97801
 Party Chief
 Stephen K, Haddock

REGISTERED
 PROFESSIONAL
 LAND SURVEYOR

David L. Haddock

OREGON
 JULY 12, 1988
 DAVID L. HADDOCK
 RECEIVED 852

Umatilla County Surveyor
 Date _____
 Rec'd By _____
 No. _____