

OREGON CORNER RESTORATION FORM

Section 10,11
County Umatilla

Township 3N
Date: 03/12/10

Range 29E

Corner Designation: 3N29G17

1/4 Corner common to Sections 10 and 11, T3NR29E.

- Condition Report Only
- Not Found
- Remonumented
- Unrecorded
- Surveyed In
- Referenced Out

Previous Renewals / Surveys, etc.

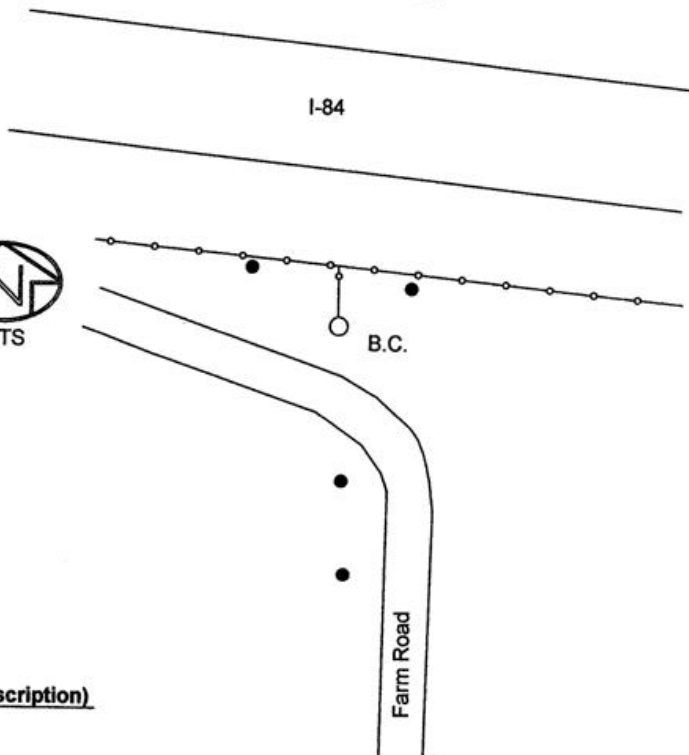
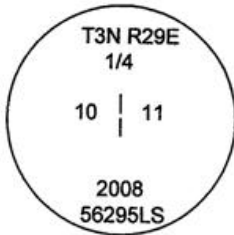
Originally Surveyed by Gates in 1859. He set a post in a mound of earth.
Peter Zahner re-established the corner by single-proportion in Survey Book 1, Page 103. He set a stone, over a bottle.
ODOT gives coordinates for this corner in map 8B-34-18, but a monument was never identified.

Monuments and Accessories Found: (Condition and Source)

- Found a 2 1/2" Brass cap set by 56295LS. Flush with the surface.
- A 1/2" Iron rebar, w/opc #56295, lies N 47°40' W, 43.09'.
- A 1/2" Iron rebar, w/opc #56295, 18" deep lies S 2°10' E, 78.11'.
- A 1/2" Iron rebar, w/opc #56295, 18" deep lies S 2°10' E, 100.75'.
- A 1/2" Iron rebar, w/ODOT alc SHRW, lies N 72° E, 37.30'.

Sketch

Diagram



NAD 83/91
OREGON STATE PLANE NORTH
INTERNATIONAL FEET

N758689.87
E8527434.11

LAT - 45° 44' 26.253872" N
LON - 119° 13' 32.52032858" W

Monument (s) Set (Procedures and Description)

None.

References Set:

None.

Location and Comments

The corner is 1.5 miles East of Echo and North 0.5 miles on a graveled farm road to the I-84 State Highway Right-of-Way fence.

Compass Declination

17° E

Surveyors Seal

REGISTERED
PROFESSIONAL
LAND SURVEYOR

Robert D. English
OREGON
JANUARY 11, 2005
ROBERT DOUGLAS ENGLISH
43406LS

RECEIVED BY:

Date: 3-10
Rec'd By: RE
No. 10-25-R

Firm / Agency

Survey One, LLC.
P.O. Box 382
Pendleton, OR 97801
(541) 276-2055

RENEWAL DATE: 12/31/11