

**OREGON CORNER RESTORATION FORM**

Section 6 Township 3N  
County Umatilla Date: 12/31/08

Range 29E

Corner Designation: 3N29A1

Section corner common to T3N29ES6, T3N28S1, T4N28S36, T4N29ES31

- Condition Report Only
- Not Found
- Remonumented
- Unrecorded
- Surveyed In
- Referenced Out

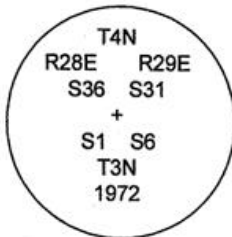
**Previous Renewals / Surveys, etc.**

Originally Surveyed by Gates in 1859. He set a post in a mound of earth.  
In 1972 Staebler set a 3" brass cap in concrete see survey #H-107-B.  
In 1995 Edwards found a 3" B.C.  
In 2002 Haddock found a 3" B.C.  
In 2002 Primm found a 3" B.C.

**Monuments and Accessories Found: (Condition and Source)**

An aluminum tag #951 on a power pole lies N 45°30' W, 74.97'.  
An aluminum tag #951 on a railroad tie fence post lies N 72°00' E, 74.05'.  
An aluminum tag #951 on a power pole lies S 64°00' W, 46.41'.  
A 3" B.C.

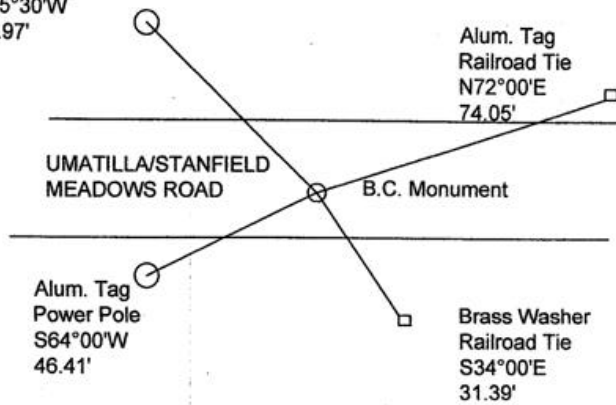
**Diagram**



Alum. Tag  
Power Pole  
N45°30'W  
74.97'



**Sketch**



NAD 83/91  
OREGON STATE PLANE NORTH  
INTERNATIONAL FEET

771816.842  
8521403.187

LAT - 45° 46' 36.77459" N LON - 119° 14' 54.68715" W

**Monument (s) Set (Procedures and Description)**

None.

**References Set:**

A brass washer #43406 and nail on a railroad tie fence post lies S 34°00' E, 31.39'.

**Location and Comments**

From the intersection of Echo Meadows Rd. and Umatilla Meadows Rd. go West .5 miles to the corner.

**Compass Declination**

17° E

**Surveyors Seal**

REGISTERED  
PROFESSIONAL  
LAND SURVEYOR

*Robert D. English*  
OREGON  
JANUARY 11, 2005  
ROBERT DOUGLAS ENGLISH  
43406LS

**RECEIVED BY:**

Date: 01-09  
Rec'd By: KK  
No. 09-11-R

**Firm / Agency**

Survey One, LLC.  
P.O. Box 382  
Pendleton, OR 97801  
(541) 276-2055

RENEWAL DATE: 12/31/09