

OREGON CORNER RESTORATION FORM

SECTION 1,6,31,36 TOWNSHIP 4 & 3 NORTH RANGE 28 & 29 EAST Z-1
 COUNTY : UMATILLA DATE 01/02

CORNER DESIGNATION

SECTION CORNER

- X CONDITION REPORT ONLY
 — NOT FOUND
 — RENEWED
 — UNCOVERED
 — SURVEYED IN
 — REFERENCED

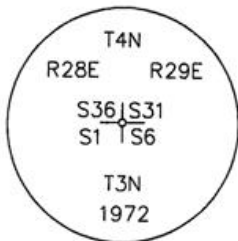
PREVIOUS RENEWALS / SURVEYS, ETC.

ORIGINALLY SURVEYED IN 1859 BY GATES UNDER CONTRACT #84. HE SET A POST IN A MOUND OF EARTH.
 IN 1972 STAEBLER SET A 3" B.C. IN CONC SEE SURVEY #H-107-B

MONUMENTS AND ACCESSORIES FOUND: CONDITION AND SOURCE

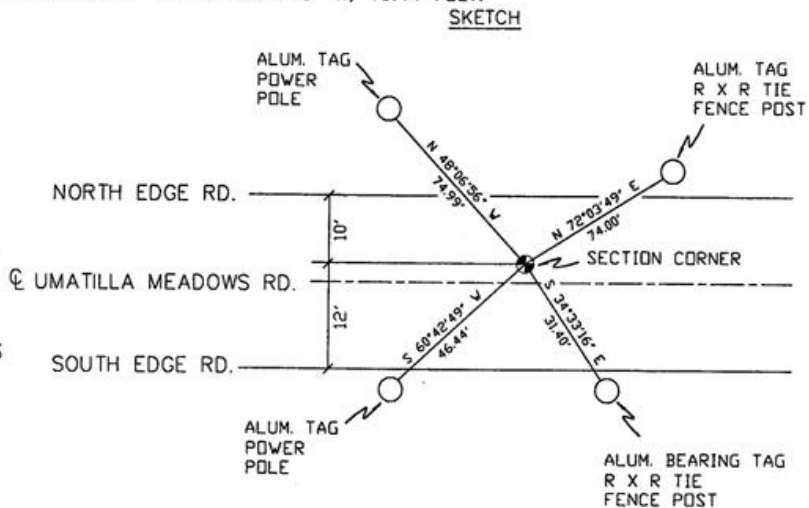
AN ALUMINUM TAG #951 ON A POWER POLE LIES N 48°06'56" W, 74.99 FEET.
 AN ALUMINUM TAG #951 ON R X R TIE FENCE POST LIES N 72°03'49" E, 74.00 FEET.
 AN ALUMINUM BEARING TAG ON R X R TIE FENCE POST LIES S 34°33'16" E, 31.40 FEET.
 AN ALUMINUM TAG #951 ON A POWER POLE LIES S 60°42'49" W, 46.44 FEET.

MONUMENT DETAIL



NAD 83/91
 OREGON STATE PLANE
 INTERNATIONAL FEET

771811.7212
 8521408.2423



SKETCH

MONUMENT SET (PROCEDURES AND DESCRIPTION)

NEW ACCESSORIES FROM WHICH

RECEIVED BY

Umatilla County Surveyor

Date 2-02

Rec'd By KK

No. 02-49-9

LOCATION AND COMMENTS

FROM INTERSECTION OF ECHO MEADOWS RD. AND UMATILLA MEADOWS RD. GO WEST 1/2 MILE TO COR.

COMPASS DEC.

FIRM/AGENCY
 PRIMM LAND SURVEYING
 P.O. BOX 1322
 HERMISTON, OREGON 97838

PARTY CHIEF
 KEITH P. PRIMM

NOTES

WITNESS
 BRIT L. PRIMM

SURVEYOR'S SEAL

REGISTERED
 PROFESSIONAL
 LAND SURVEYOR

Brit L. Primm

OREGON
 JULY 13, 1999
 BRIT L. PRIMM
 48509

EXPIRATION DATE: 12/31/02