

OREGON CORNER RESTORATION FORM

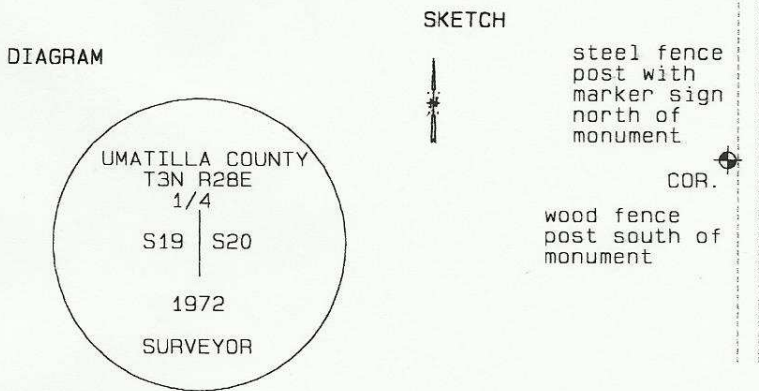
Section 26 Township 3N Range 28E
 County Umatilla Date: 06-18-02

Corner Designation: 3N28T21

x	Condition Report Only
	Not Found
	Remonumented
	Unrecorded
	Surveyed In
	Referenced Out

Previous Renewals / Surveys, etc.
 Survey H-107-B records setting a brass cap here.

Monument and Accessories Found: (condition and source)
 Found a brass capped monument marked as shown in the diagram near a north south field road.



MONUMENT (S) AND ACCESSORIES SET (Procedures and Description)

None.

REFERENCES SET:

None.

Made GPS tie to TRI Station Stanfield East Base. Latitude 45°42'40.80339"N Longitude 119°16'09.29057"W NAD 83(1991)	Oregon State Plane Coord. - North Zone Northing 747837.57 Easting 8516480.35 Ortho Height 740.57 Ellipsoidal Height 671.14
--	--

Location and Comments	Compass Declination	Surveyors Seal
	20 °E	

From the junction of Highway 320 and Rosenberg Road, go northeast 0.6 mile. Then go south on a field road 0.6 mile to the corner.

REGISTERED
 PROFESSIONAL
 LAND SURVEYOR

RECEIVED BY:	Firm / Agency
Date: <u>7-02</u>	Haddock Surveying
Rec'd By: <u>KK</u>	P. O. Box 1574
No. <u>02-187-9</u>	Pendleton, OR 97801
	(541) 276-2174

OREGON
 JULY 12, 1968
 DAVID L. HADDOCK
 852