

**OREGON CORNER RESTORATION FORM**

Section 24 Township 3N Range 27E  
 County Umatilla Date: 06-28-02

Corner Designation: 3N27P25

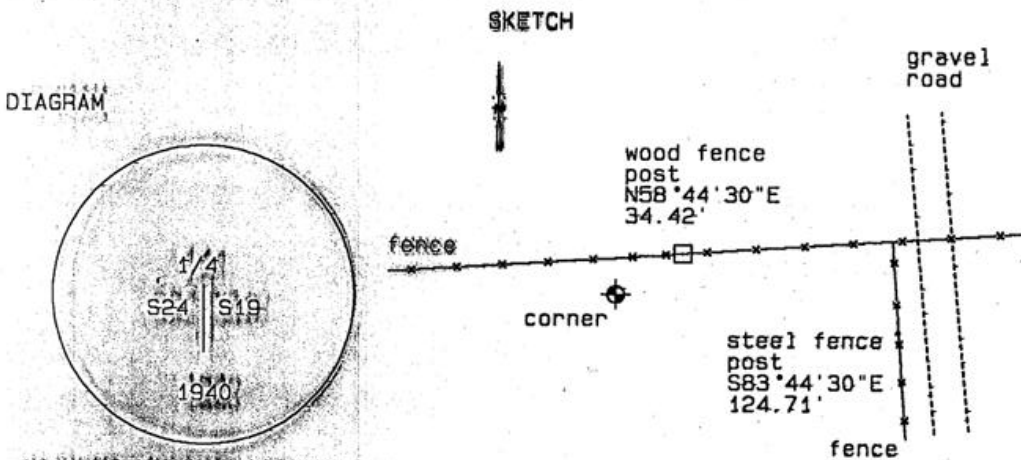
Condition Report Only  
 Not Found  
 Remonumented  
 Unrecorded  
 Surveyed In  
 Referenced Out

Previous Renewals / Surveys, etc.

Could set a brass capped monument here in 1940.  
 Survey 90-25-A records resetting a monument here.

Monument and Accessories Found: (condition and source)

Found a brass capped GLO monument here in good condition.



MONUMENT (S) AND ACCESSORIES SET (Procedures and Description)

None.

REFERENCES SET:

N808 GPS tie to TBI Station  
 Stanfield East Base  
 Latitude: 45°48'35.89889" N  
 Longitude: 119°22'21.08187" W  
 NAD 83 (1991)

Oregon State Plane Coord. - North Zone  
 Northing 753005.18  
 Easting 8490024.05  
 Ortho Height 723.70  
 Ellipsoidal Height 654.00

Location and Comments

Compass Declination  
20°E

Surveyors Seal

From the intersection of Echo Hwy and Butter Cr.  
 Hwy go west on gravel road 0.7 mile. Then go  
 north on gravel road 1.1 miles. The corner is  
 160' west of this road.

REGISTERED  
 PROFESSIONAL  
 LAND SURVEYOR

RECEIVED BY:

Firm / Agency

*David L. Haddock*

Date: 12-30-02  
 Rec'd By: KKK  
 No.: 02-282-9

Haddock Surveying  
 P. O. Box 1574  
 Pendleton, OR 97801  
 (541) 276-2174

OREGON  
 JULY 12, 1968  
 DAVID L. HADDOCK  
 852

RENEWS 6-30-03