

**OREGON CORNER RESTORATION FORM**

Section 18  
County Umatilla

Township 3N  
Date: 08/18/09

Range 29E

Corner Designation: 3N29N1

Corner common to section 13,24, T3NR28E, and section 18,19, T3NR29E.

- Condition Report Only
- Not Found
- Remonumented
- Unrecorded
- Surveyed In
- Referenced Out

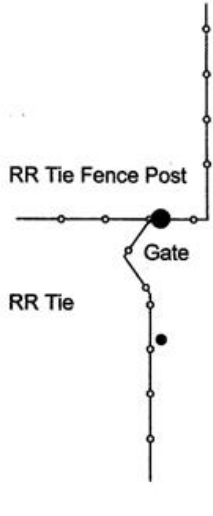
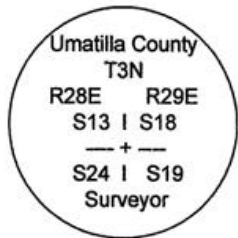
**Previous Renewals / Surveys, etc.**

Originally Surveyed by N.H. Gates in 1859. He set a post in a mound of earth.  
Survey I-157-B records finding a brass cap.  
Condition report by D. Haddock 6/14/02 found brass capped monument 4" below surface.

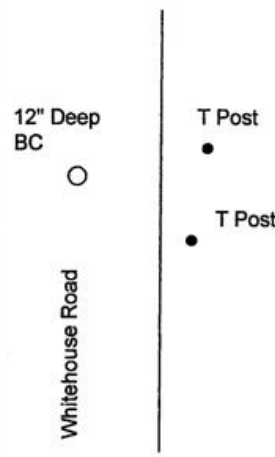
**Monuments and Accessories Found: (Condition and Source)**

A 2.5" B.C.  
A B.C. W.C. lies N 86°00' W, 45.56'.

**Diagram**



**Sketch**



NAD 83/91  
OREGON STATE PLANE NORTH  
INTERNATIONAL FEET

N755830.82  
E8521665.54

LAT - 45° 43' 58.92504" N  
LON - 119° 14' 54.47988" W

**Monument (s) Set (Procedures and Description)**

None.

**References Set:**

- A 3/4" x 30" Iron rebar w/ypc #43406 lies S 39°45' E, 36.97'.
- A 3/4" x 30" Iron rebar w/ypc #43406 lies N 87°00' E, 29.63'.
- A 3/4" x 30" Iron rebar w/ypc #43406 lies S 48°00' W, 38.45'.

**Location and Comments**

The corner is .6 miles North of the intersection of Hwy. 320 and Whitehouse Rd.

**Compass Declination**

17° E

**Surveyors Seal**

REGISTERED  
PROFESSIONAL  
LAND SURVEYOR

*Robert D. English*  
OREGON  
JANUARY 11, 2005  
ROBERT DOUGLAS ENGLISH  
43406LS

**RECEIVED BY:**

Date: 1-11  
Rec'd By: SK  
No. 11-15-R

**Firm / Agency**

Survey One, LLC.  
P.O. Box 382  
Pendleton, OR 97801  
(541) 276-2055

RENEWAL DATE: 12/31/09