

**OREGON CORNER RESTORATION FORM**

Section 7  
County Umatilla

Township 3N  
Date: 08/18/09

Range 29E

Corner Designation: 3N29J1

Corner common to section 12,13, T3NR28E, and section 7,18, T3NR29E.

- Condition Report Only
- Not Found
- Remonumented
- Unrecorded
- Surveyed In
- Referenced Out

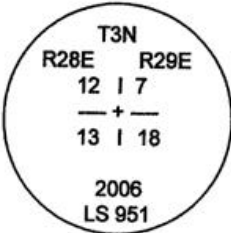
**Previous Renewals / Surveys, etc.**

Originally Surveyed by N.H. Gates in 1859. He set a post in a mound of earth.  
Partition Plat 2006-13 Edwards set 1" x 30" Iron Pipe with 2 3/8" Brass Cap.

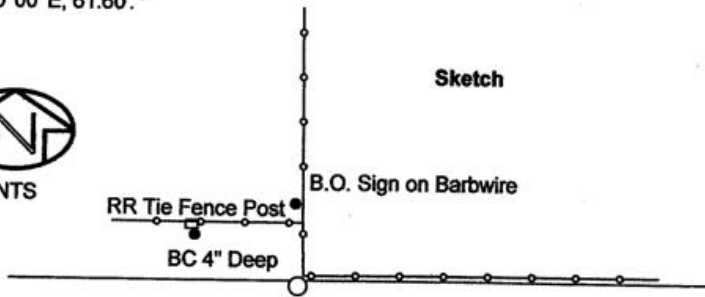
**Monuments and Accessories Found: (Condition and Source)**

- A 2.5" B.C.
- A 5/8" Iron rebar w/ypc #951 lies N, 19.99'.
- A 5/8" Iron rebar w/ypc #951 lies S 61°00' W, 49.66'.
- A 5/8" Iron rebar w/ypc #951 lies S 40°00' E, 61.60'.

Diagram



Sketch

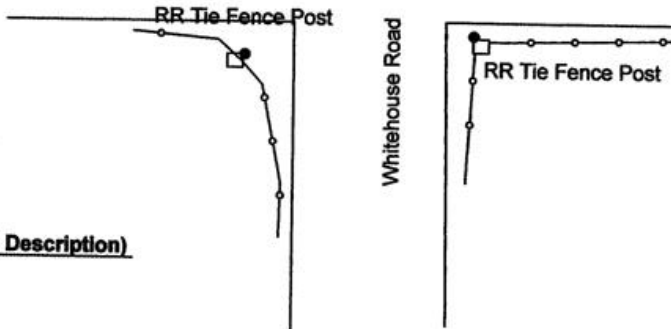


NAD 83/91  
OREGON STATE PLANE NORTH  
INTERNATIONAL FEET

N761160.97  
E8521542.44

LAT - 45° 44' 51.574325" N  
LON - 119° 14' 54.810567" W

**Monument (s) Set (Procedures and Description)**  
None.



**References Set:**

A 5/8" x 30" Iron rebar w/ypc #43406 lies N 56°00' W, 29.26'.

**Location and Comments**

The corner is 1.6 miles North of the intersection of Hwy. 320 and Whitehouse Rd.

**Compass Declination**  
17° E

**Surveyors Seal**

REGISTERED  
PROFESSIONAL  
LAND SURVEYOR

*Robert D. English*  
OREGON  
JANUARY 11, 2005  
ROBERT DOUGLAS ENGLISH  
43406LS

RECEIVED BY:

Date: 10-09  
Rec'd By: KE  
No. 09-146-R

Firm / Agency

Survey One, LLC.  
P.O. Box 382  
Pendleton, OR 97801  
(541) 276-2055

RENEWAL DATE: 12/31/09