

OREGON CORNER RESTORATION FORM

Section 14 Township 3N Range 28E
 County Umatilla Date: 06-14-02

Corner Designation: 3N28J21

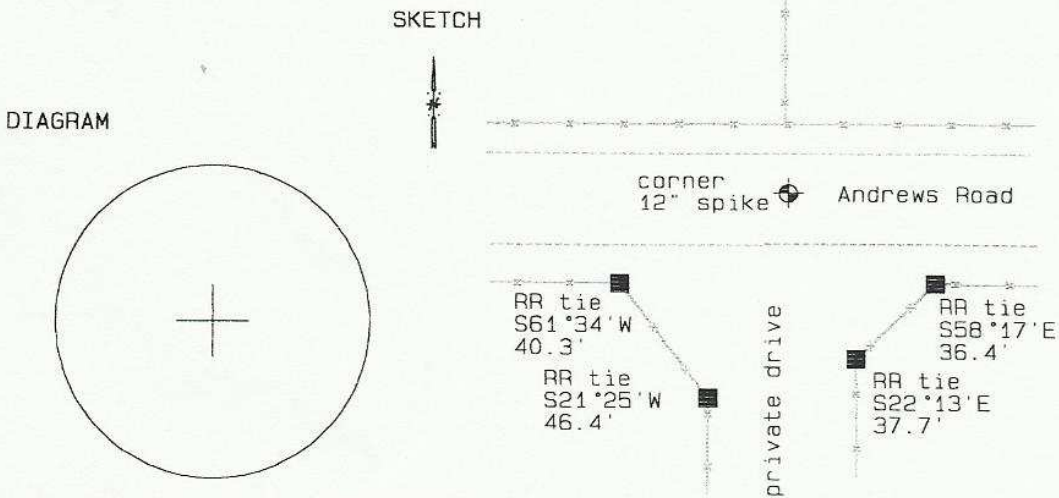
x	Condition Report Only
	Not Found
	Re-monumented
	Unrecorded
x	Surveyed In
	Referenced Out

Previous Renewals / Surveys, etc.

Survey 97-100-B reported setting a 12" bridge spike here.

Monument and Accessories Found: (condition and source)

Found the bridge spike 4" below the surface in the intersection of Andrews and a southbound private driveway.



MONUMENT (S) AND ACCESSORIES SET (Procedures and Description)

None.

REFERENCES SET:

None.

Made GPS tie to TRI Station	Oregon State Plane Coord. - North Zone
Stanfield East Base.	Northing 761104.82
Latitude 45°44'51.80684" N	Easting 8516272.09
Longitude 119°16'09.37702" W	Ortho Height 597.71
NAD 83 (1991)	Ellipsoidal Height 528.05

Location and Comments Compass Declination Surveyors Seal

20 °E

From the overpass of Echo Meadows Road over I84, go south 1.5 miles. Take Andrews Road west 1.5 miles to the corner.

REGISTERED
 PROFESSIONAL
 LAND SURVEYOR

RECEIVED BY:

Firm / Agency

David L. Haddock

Date: 7-02
 Rec'd By: KE
 No. 02-185-g

Haddock Surveying
 P. O. Box 1574
 Pendleton, OR 97801
 (541) 276-2174

OREGON
 JULY 12, 1968
 DAVID L. HADDOCK
 852