

OREGON CORNER RESTORATION FORM

Section 12 Township 3N Range 27E
County Umatilla Date 06-27-08

Corner Designation: 3N27J25

Condition Report Only
 Not Found
 Remonumented
 Unrecorded
 Surveyed In
 Referenced Out

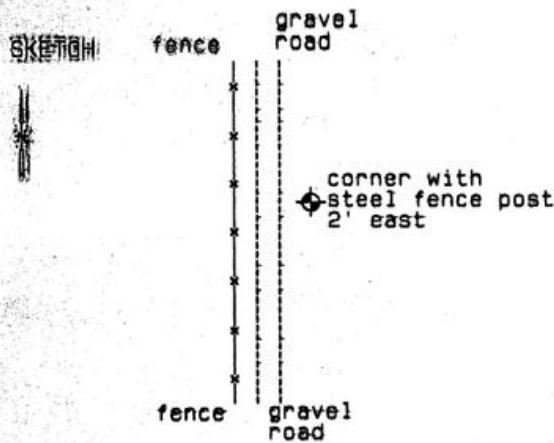
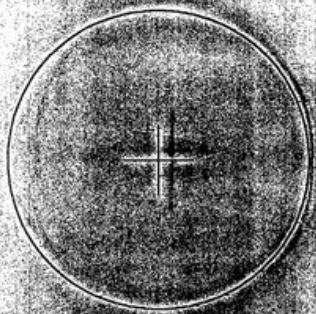
Previous Renewals / Surveys, etc.

The GLO set a corner here in 1940.
Survey S-90-B reports finding that monument.

Monument and Accessories Found: (condition and source)

Found the monument as described below with the brass cap cut off.

DIAGRAM



MONUMENT (S) AND ACCESSORIES SET (Procedures and Description)

None.

REFERENCES SET

None.

Made GPS tie to TBM Station
Stanfield East Base
Latitude 45 44 54.50600 N
Longitude 119 22 20.76777 W
NAD 83 (1994)

Oregon State Plane Coord. - North Zone
Northing 760973.77
Easting 8489935.29
Ortho Height 694.77
Ellipsoidal Height 624.96

Location and Comments Compass Declination 20°E Surveyors Seal

From the Jct of 184 with Westland Road,
go south 1.4 miles then go south on the Madison Farm
circle roads 2.2 miles to the corner.

REGISTERED
PROFESSIONAL
LAND SURVEYOR

David L. Haddock

RECEIVED BY

Firm / Agency

Date: 12-02-08
Rec'd By: K.K.
No.: 02-282-g

Haddock Surveying
P.O. Box 1674
Pendleton, OR 97601
(541) 278-2174

OREGON
JULY 12, 1968
DAVID L. HADDOCK
852

RENEWS 6-30-03