

OREGON CORNER RESTORATION FORM

SECTION 36 TOWNSHIP 4 NORTH RANGE 27 EAST

Z-23

COUNTY : UMATILLA DATE 12/02

CORNER DESIGNATION

S 1/4 CORNER

CONDITION REPORT ONLY
 NOT FOUND
 RENEWED
 UNCOVERED
 SURVEYED IN
 REFERENCED

PREVIOUS RENEWALS / SURVEYS, ETC.

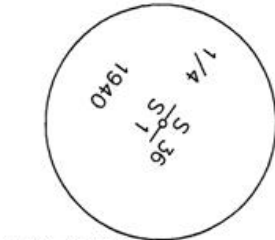
ORIGINALLY SURVEYED UNDER CONTRACT #91 IN 1860 BY HAFT.
 GOULD 1940 DEPENDENT RE-SURVEY SET A 3 1/2" BRASS CAP.

MONUMENTS AND ACCESSORIES FOUND: CONDITION AND SOURCE

A 3 1/2" BRASS CAP.
 A 2 1/2" BRASS CAP LIES S 88°10'13" W, 144.62 FEET.
 A 2 1/2" BRASS CAP LIES S 36°15'42" E, 60.88 FEET.

MONUMENT DETAIL

CAP IS ROTATED ±120°

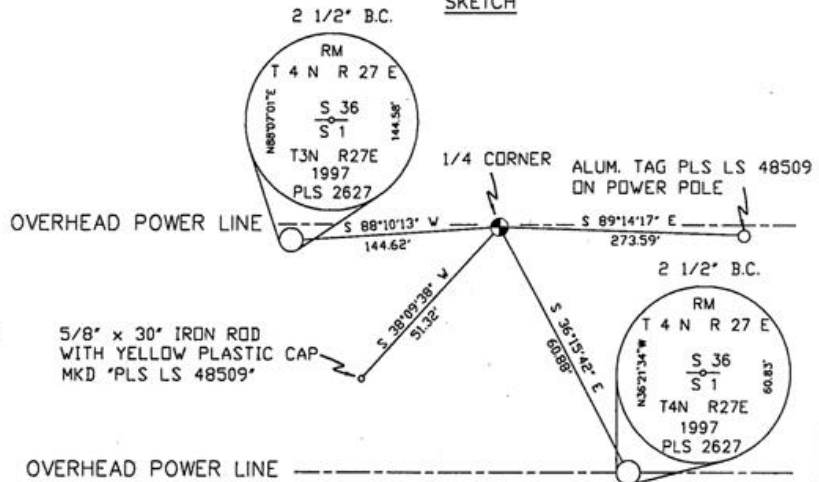


NAD 83/91
 OREGON STATE PLANE
 INTERNATIONAL FEET

771553.9607
 8487132.2291



SKETCH



MONUMENT SET (PROCEDURES AND DESCRIPTION)

NEW ACCESSORIES FROM WHICH

AN ALUMINUM TAG "PLS LS 48509" ON A POWER POLE LIES S 89°14'17" E, 273.59 FEET.
 A 5/8" x 30" IRON ROD WITH A YELLOW PLASTIC CAP MKD "PLS LS 48509" LIES S 38°09'38" W, 51.32 FEET.

LOCATION AND COMMENTS

FROM INTERSECTION OF NOBLE RD. WITH COL. JORDAN RD. GO SOUTH 0.5 MILE THEN WEST 0.5 MILE ALONG POWER LINE TO CORNER.

COMPASS DEC.

FIRM/AGENCY
 PRIMM LAND SURVEYING
 P.O. BOX 1322
 HERMISTON, OREGON 97838

PARTY CHIEF
 KEITH P. PRIMM

NOTES

WITNESS
 BRIT L. PRIMM

SURVEYOR'S SEAL

REGISTERED
 PROFESSIONAL
 LAND SURVEYOR

Brit L. Primm
 OREGON
 JULY 13, 1999
 BRIT L. PRIMM
 48509

EXPIRATION DATE: 12/31/04

03-49-9