

USDA-FOREST SERVICE

Index

File No. \_\_\_\_\_

CORNER RECORD (SEARCH)

(Ref. FSM 7151.4)

Tract or

Survey No. UIR

Cor.

No. 56 1/2

T 1 S 425 R. 35 E

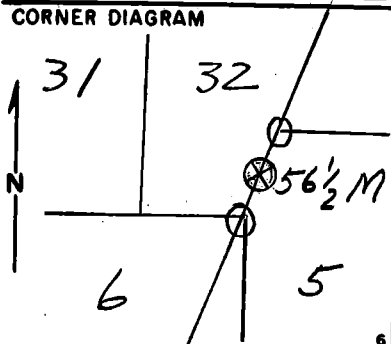
R.D. UMATILLA

County Umatilla

Merid. \_\_\_\_\_

N.F. Umatilla State Ore

CORNER DIAGRAM



DESCRIBE CORNER MONUMENT FOUND

12" Doug FIR. on Line & Dist  
From Bry. Tree 56 1/2 mile MARK

DESCRIBE BEARING TREES OR OTHER OFFICIAL ACCESSORIES FOUND

48" White Fir snag with chopped  
out Bry. with scrubbing  
old G. P. "K." Tags

PHOTO IDENTIFICATION DATA

Photo No. \_\_\_\_\_

Filed At. \_\_\_\_\_

Object Ident. \_\_\_\_\_

Ident. By \_\_\_\_\_

Signature \_\_\_\_\_

PLANE COORDINATE POSITION DATA

State \_\_\_\_\_ Zone \_\_\_\_\_

X \_\_\_\_\_

Y \_\_\_\_\_

Estab. By \_\_\_\_\_

Agency \_\_\_\_\_

Signature \_\_\_\_\_

Title \_\_\_\_\_

Division \_\_\_\_\_

Headquarters \_\_\_\_\_

Date \_\_\_\_\_

7100-52-(3,68)

S.O.

9-83

4

5

**CORNER RECORD (PERPETUATION)**

**MONUMENT : DESCRIBE NEW MONUMENT SET, OR WORK DONE TO PRESERVE EXISTING MONUMENT**

**ACCESSORIES : DESCRIBE NEW BT<sup>1</sup>/<sub>4</sub> WITNESS OBJECTS ETC. ESTABLISHED, OR WORK DONE TO PRESERVE EXISTING EVIDENCE**

Work Done By \_\_\_\_\_ Title \_\_\_\_\_ Date \_\_\_\_\_ State Registration No. \_\_\_\_\_  
or Agency \_\_\_\_\_

Certified Cor. Record Prepared ? Yes No Filed At \_\_\_\_\_ Date \_\_\_\_\_

**REMARKS**

Index File No. T. R. M. Tract or Surv. No. Cor. \_\_\_\_\_