

**CERTIFIED RECORD OF LAND CORNER MONUMENTATION**

**HISTORY OF ORIGINAL CORNER ESTABLISHED:**

Original corner set by Rufus Moore, under GLO contract No. 451, dated June 12, 1882. Surveyor General Record States:

Set a post 3 ft. long, 3 ins. square, 24 ins. in the ground for 1/4 sec. cor. marked 1/4 S on N face, from which:

A pine, 3 ins. in dia. bears N46°W, 24 lks. dist., marked 1/4 SBT.

A pine, 3 ins. in dia. bears S7°E, 53 lks. dist., marked 1/4 SBT.

Corner not found and replaced at proportioned position by L.E. Wilkes under GLO special instructions dated February 20, 1917, included under Group No. 29. Field notes state:

Set an iron post, 3 ft. long, 1 ins. diam., 26 ins. in the ground, for 1/4 sec. cor., with brass cap. From which:

A lodgepole pine, 6 ins. diam., bears S.30°W., 6 lks. dist., marked 1/4 S19 BT.

A lodgepole pine, 6 ins. diam., bears N.60°E., 7 lks. dist. marked 1/4 S18 BT.

Corner not found and replaced at proportioned position by Fayette Munro in Survey Number 84-101-B. Umatilla County monumentation records states:

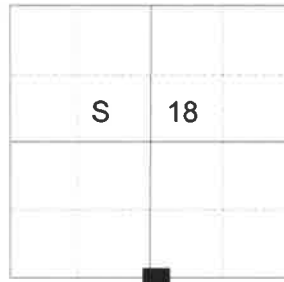
At proportionate distance, set a 2 1/2"x30" alum pipe with a 3" alum cap containing a magnet and marked:

From which:

A D.Fir, 10" Dia., N17 1/4°W, 24.2 ft. marked 1/4 S18 BT.

A D.Fir, 11" Dia., S73°E, 22.4 ft., marked 1/4 S19 BT.

**T 2 S R 35 E N-03**



**DESCRIPTION OF CORNER EVIDENCE FOUND:**

Found 1" iron pipe with 2 1/2" GLO Brass Cap, marked as shown below, from which:

A 3" aluminum cap on 2 1/2" aluminum pipe, marked as per Umatilla County monumentation record 84-134-R, bears South 2°00'21" West, a distance of 23.01 feet, set by Munro in Survey Number 84-101-B.

A 19" Douglas Fir bears South 87° West, a distance of 7.95 feet, alive and vigorous with a healed blaze facing the Munro aluminum cap. I blaze and scribe this tree "1/4 S19 BT" facing the Wilkes monument.

SEE SURVEY FOR HANCOCK FOREST MANAGEMENT DATED OCTOBER 2017

**DESCRIPTION OF MONUMENT AND ACCESSORIES I ESTABLISHED**

**TO PERPETUATE THE ORIGINAL LOCATION OF THIS CORNER:**

From the iron pipe monument,

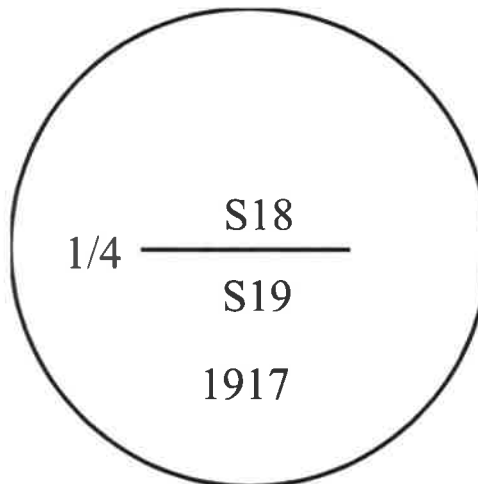
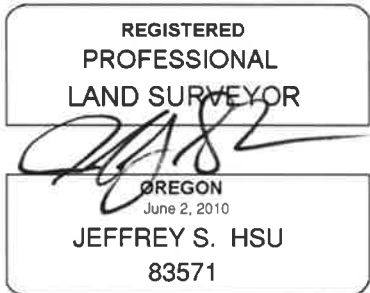
**NEW BEARING TREES:**

A 10" White Fir bears South 21° East, a distance of 15.60 feet, marked 1/4 S19 BT.

A 12" White Fir bears North 19° West, a distance of 9.35 feet, marked 1/4 S18 BT.

I hereby certify that the corner was perpetuated October 25, 2017.

Witness: Kyle Tucker



I used a steel tape and magnetic compass in the establishment of the bearing trees. Magnetic declination used was 13° East. Bearing is to a brass washer marked OPLS 83571 in the lower blaze of the tree. Distance is to a spike set in the root crown of the side of the tree.