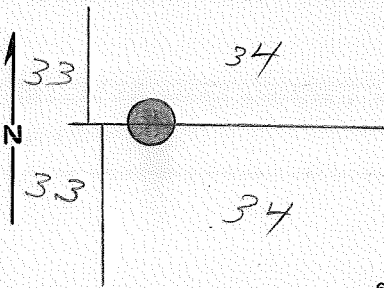


Index File No. M.P. 64 1/2 U.I.R. CORNER RECORD (SEARCH) Tract or Survey No. \_\_\_\_\_ Cor. No. \_\_\_\_\_  
 T 25 R. 34 E R.D. LaGrande County Union  
 Merid. Will N.F. W-W State Oregon

CORNER DIAGRAM



DESCRIBE CORNER MONUMENT FOUND

Brass Cap set in 1917

DESCRIBE BEARING TREES OR OTHER OFFICIAL ACCESSORIES FOUND

Both BTs have been cut  
 New BTs set by Barry Barbour RLS in 1980 (see Barbour's plat)  
 15" TAM, N64°E, 33.7ft. UIR MP 64 1/2 WC BT  
 14" PINE, S17°W, 62.5ft. UIR MP 64 1/2 WC BT  
 Sign 54-4 on steel fence post 5' east.

PHOTO IDENTIFICATION DATA

Photo No. \_\_\_\_\_  
 Filed At. \_\_\_\_\_  
 Object Ident. \_\_\_\_\_  
 Ident. By \_\_\_\_\_  
 Signature \_\_\_\_\_

PLANE COORDINATE POSITION DATA

State \_\_\_\_\_ Zone \_\_\_\_\_  
 X \_\_\_\_\_  
 Y \_\_\_\_\_  
 Estab. By \_\_\_\_\_  
 Agency \_\_\_\_\_

DESCRIBE CORNER LOCATION RELATIVE TO NEAR-BY FEATURES, ALSO HOW TO REACH CORNER

Signature \_\_\_\_\_ Title \_\_\_\_\_ Division \_\_\_\_\_ Headquarters \_\_\_\_\_ Date \_\_\_\_\_

Dave Dahlstrom CET LaGrande 2-8-80

CORNER RECORD (PERPETUATION)

MONUMENT: DESCRIBE NEW MONUMENT SET, OR WORK DONE TO PRESERVE EXISTING MONUMENT

ACCESSORIES DESCRIBE NEW BT's WITNESS OBJECTS ETC. ESTABLISHED, OR WORK DONE TO PRESERVE EXISTING EVIDENCE

Work Done By \_\_\_\_\_ Title \_\_\_\_\_ Date \_\_\_\_\_ State Registration No. or Agency \_\_\_\_\_

Certified Cor. Record Prepared ? Yes No Filed At: \_\_\_\_\_ Date \_\_\_\_\_

REMARKS

Index File No. T. R. M. Tract or Surv. No. Cor.