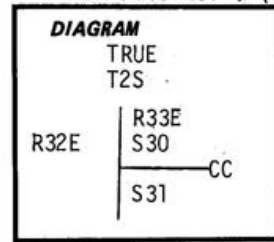


CERTIFIED RECORD OF LAND CORNER MONUMENTATION

Index File No. V-(1-3)

History of original corner establishment:

In 1890, under G.L.O. contract No. 551, John C. Arnold set 12x8x6 ins. basalt stone 8" in ground for closing corner to secs. 30 & 31. Marked 5 notches on N. cor., 1 notch on S. cor. & CC on W. face; raised mound of stone 2 ft x 3 1/2 ft over cor. from which a Fir 12 ins. dia. bears N20°E, 33 lks dist. Marked T2S R33E S30 BT. A Pine 36" dia. bears S40°E, 62 lks dist., marked T2S R33E S31 BT on W. face of mntn.

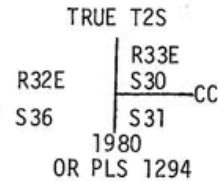


Description of corner evidence found:

Found 29" Fir with healed over blaze cut into to expose scribing "R33E S". Found 37" Ponderosa Pine with healed over blaze. At intersection of record dist. from both BT's set 40 Penny Spike and searched for original stone. There are a lot of stones scattered down the hillside. Found 12"x7"x4" stone w/cc on face & 5 notches on one side & 1 notch on the other side, down the hill from spike, lying on its side. I think the bearing numbers were reversed in original notes. The bearing I read to old BT's are N39°E to Fir & S15°E to Pine. Blazes face to point where spike is set. The original C.C. was remonumented and stamped AM for Amended because it does not fall at the True intersection point.

Description of monument and accessories established to perpetuate the original location of this corner:

At True intersection point set 2 1/2"x30" galvanized pipe with brass cap stamped:
Set pipe 24" in ground with mound of stone to cap.



Bearing Trees:

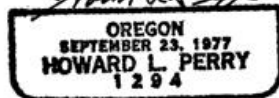
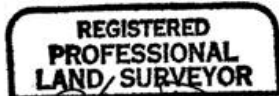
OLD: A Douglas Fir 29" dia. bears N48°E 24.8 ft with visible scribing "R33E S".
A Ponderosa Pine 37" dia. bears S22E 43.6 ft with healed over blaze.

NEW A Douglas Fir 10" dia. bears N64°E 38.1 ft scribed T2S R33E S30 CC BT.
A Douglas Fir 11" dia. bears S42°E 15.1 ft scribed T2S R33E S31 CC BT.

Attached 54-3 & 54-4 signs to all BT's. Attached brass washer stamped LS1294 to foot blaze of new BT's. Painted blazes and 6" band around all BT's. Attached 54-4 sign to metal post 5' north of corner.

I hereby certify the above corner monument was established as herein described on August 25, 1980.

Witnesses: R. Orton
G. Wagoner
G. Lester
J. Anderson



Office of.....County Surveyor..... County of.....Umatilla.....
Oregon....., I hereby certify that the within instrument was filed in this office
for record on the.....day of.....December....., 1980
.....David..... by.....Betty Shatto.....
(COUNTY OFFICIAL) (DEPUTY)

V-1-3

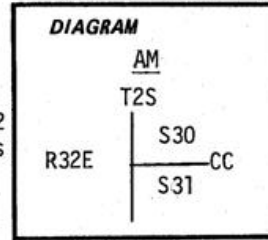
R-188-B

CERTIFIED RECORD OF LAND CORNER MONUMENTATION

Index File No. V-(1-3)

History of original corner establishment:

In 1890, under G.L.O. contract No. 551, John C. Arnold set a 12x8x6 ins. basalt stone 8" in ground for for closing corner to Secs. 30 & 31 marked 5 notches on N. cor., 1 notch on S. cor. & CC on W. face; raised mound of stone 2 ft x 3 1/2 ft over cor. from which a Fir 12 ins. dia. bears N20°E, 33 lks dist., marked T2S R33E S30 BT. A pine 36" dia. bears S40°E, 62 lks dist., marked T2S R33E S31 BT on W. face of mtn.



Note: This original CC is not on True Line. Therefore the True intersection point is monumented.

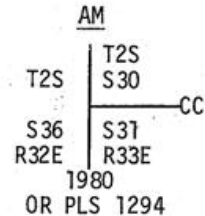
Description of corner evidence found:

Found 29" Fir with healed over blaze cut into to expose scribing "R33E S". Found 37" Ponderosa Pine with healed over blaze. At intersection of record dist. from both BT's set 40 Penny Spike and searched for original stone. There are a lot of stones scattered down the hillside. Found 12"x7"x4" stone with CC on face & 5 notches on one side & 1 notch on the otherside down the hill from spike, lying on it's side. I think the bearing numbers were reversed in original notes. The bearing I read to Old BT's are N39°E to Fir & S15°E to Pine. Blazes face to point where spike is set.

Description of monument and accessories established to perpetuate the original location of this corner:

At point where 40 Penny Spike is, set 2 1/2"x30" galvanized pipe with brass cap stamped:

Set pipe 22" in ground with mound of stone to cap. Buried original stone alongside.



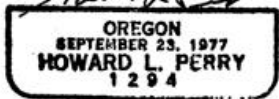
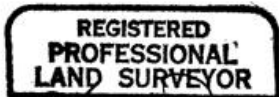
Bearing Trees:

- Old: A Douglas Fir 29" dia. bears N39°E, 21.8 ft with visible scribing "R33E S".
- A Ponderosa Pine 37" dia. bears S15°E, 40.9 ft with healed over blaze.
- New: A Douglas Fir 10" dia. bears N59°E, 33.1 ft, scribed T2S R33E S30 CC BT.
- A Douglas Fir 11" dia. bears S22°E, 10.9 ft, scribed T2S R33E S31 CC BT.

Attached 54-3 & 54-4 signs to all BT's. Attached brass washer stamped LS1294 to foot blaze of new BT's. Painted blazes and 6" band around all BT's. Attached 54-4 sign to metal post 5' East of corner. The 54-3 signs have AM marked on them.

I hereby certify the above corner monument was re-established as herein described on July 31, 1980.

Witnesses: R. Orton
L. Huntsman
D. Allen



Office of.....County Surveyor..... County of..... Umatilla.....
State of..... Oregon..... I hereby certify that the within instrument was filed in this office
for record on the..... day of..... December..... 19..... 80
..... David Bauabain..... by..... Betty Sheth.....
(COUNTY OFFICIAL) (DEPUTY)